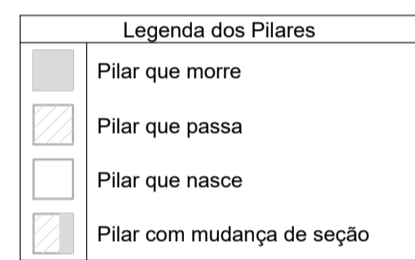


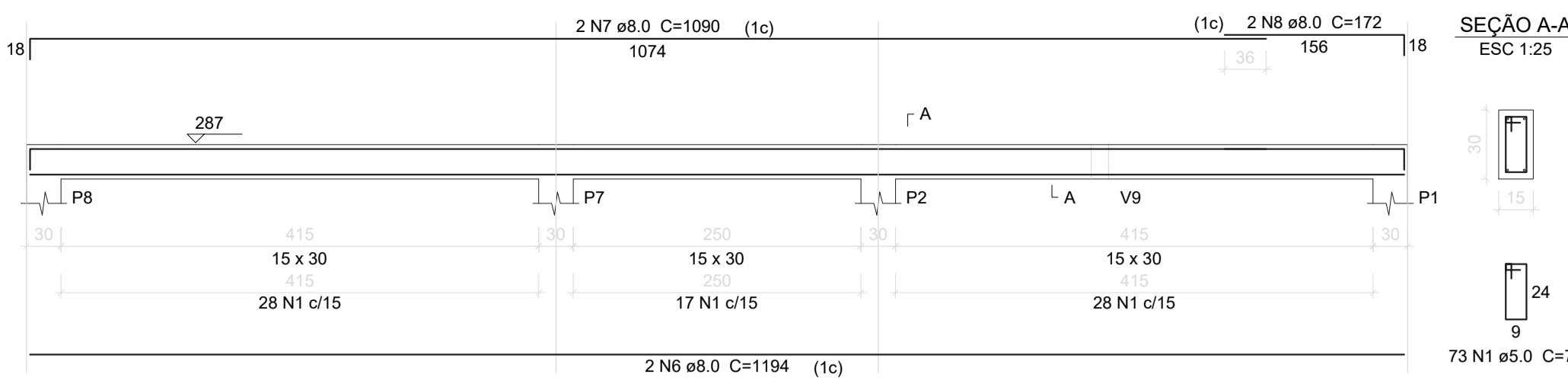
Vigas			
Nome	Seção (cm)	Elevação (cm)	Nível (cm)
V1	15x30	0	287
V2	15x30	0	287
V3	15x30	0	287
V4	15x30	0	287
V5	15x30	0	287
V6	15x30	0	287
V7	15x30	0	287
V8	15x30	0	287
V9	15x30	0	287
V10	15x30	0	287
V11	15x30	0	287
V12	15x30	0	287
V13	15x30	0	287
V14	15x30	0	287

Características dos materiais		
fck (kgf/cm²)	Ecs (kgf/cm²)	
300	260716	

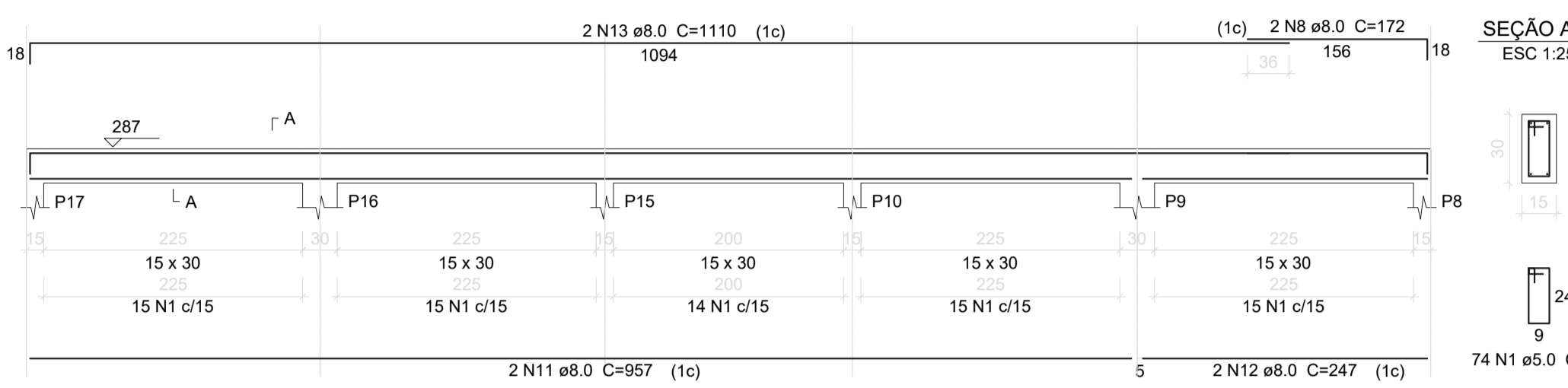
Pilares			
Nome	Seção (cm)	Elevação (cm)	Nível (cm)
P1	15 x 30	0	0
P2	15 x 30	0	0
P3	15 x 30	0	0
P4	15 x 30	0	0
P5	15 x 30	0	0
P6	15 x 30	0	0
P7	15 x 30	0	0
P8	15 x 30	0	0
P9	15 x 30	0	0
P10	15 x 30	0	0
P11	15 x 30	0	0
P12	15 x 30	0	0
P13	15 x 30	0	0
P14	15 x 30	0	0
P15	15 x 30	0	0
P16	15 x 30	0	0
P17	15 x 30	0	0
P18	15 x 30	0	0
P19	15 x 30	0	0
P20	15 x 30	0	0
P21	15 x 30	0	0
P22	15 x 30	0	0



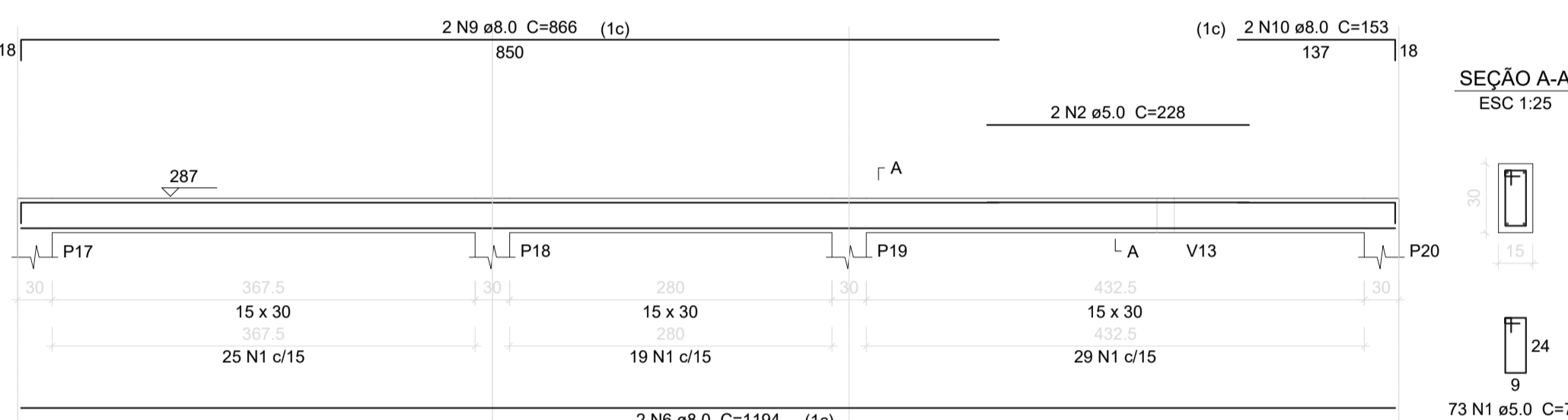
V1 ESC 1:50



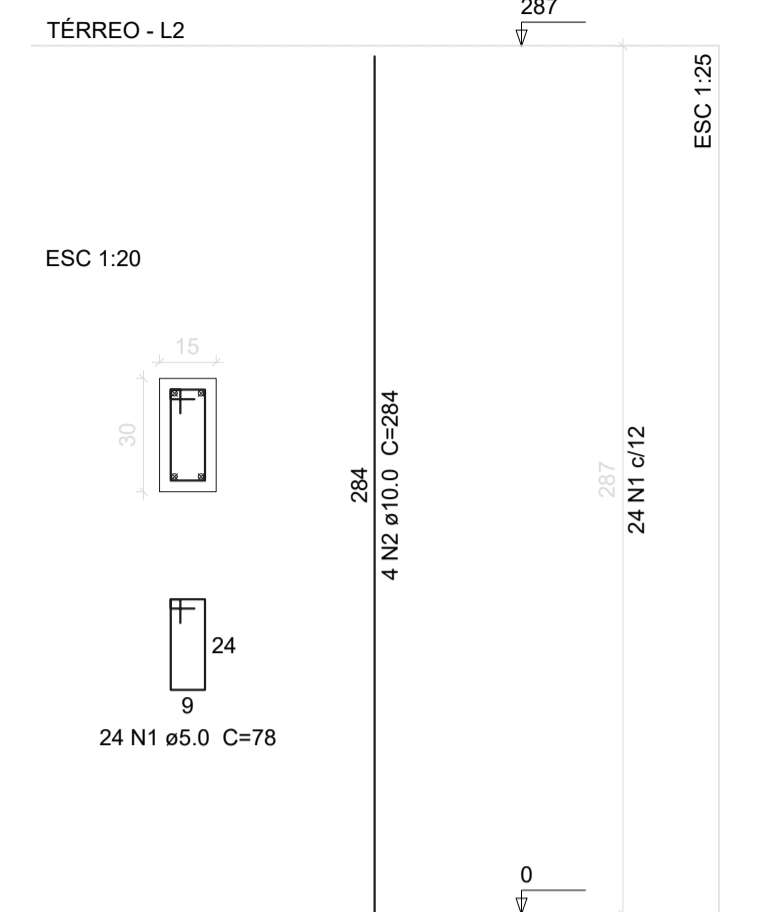
V3 ESC 1:50



V2 ESC 1:50



P1=P2=P3=P4=P5=P6=P7=P8=P9=P10=P11=P12  
=P13=P14=P15=P16=P17=P18=P19=P20=P21  
=P22



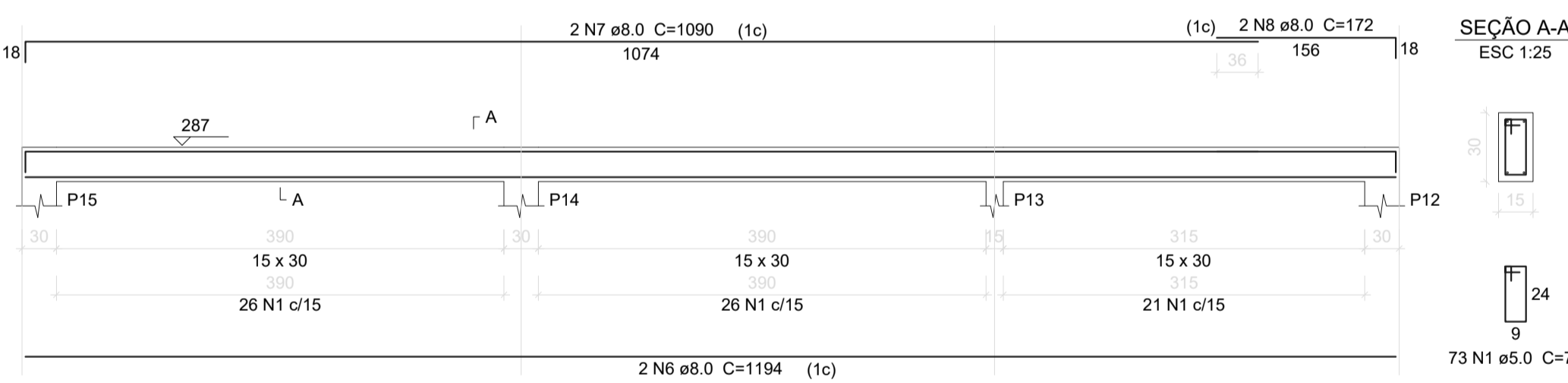
Relação do aço

AÇO	N	DIAM	Q	UNIT (cm)	C.TOTAL (cm)
CA60	1	5.0	517	78	40326
	2	5.0	2	228	456
	3	5.0	2	255	510
	4	5.0	2	179	358
	5	5.0	2	217	434
	6	8.0	6	1194	7164
	7	8.0	4	1090	4360
	8	8.0	6	172	1032
	9	8.0	2	866	1732
	10	8.0	2	153	306
	11	8.0	2	957	1914
	12	8.0	2	247	494
	13	8.0	2	1110	2220
	14	8.0	2	1074	2148
	15	8.0	2	1106	2212
	16	8.0	2	504	1008
	17	8.0	2	536	1072
	18	8.0	2	229	458
	19	8.0	2	261	522
	20	8.0	4	349	1396
	21	8.0	2	121	242
	22	8.0	2	179	358
	23	8.0	2	334	668
	24	8.0	2	366	732
	25	8.0	2	158	316
	26	8.0	2	167	334
	27	8.0	2	197	394
	28	8.0	2	292	584
	29	8.0	2	328	656
	30	8.0	2	212	424
	31	8.0	2	248	496

## Forma do pavimento Térreo

escala 1:50

V4 ESC 1:50



Relação do aço

AÇO	N	DIAM	Q	UNIT (cm)	C.TOTAL (cm)
CA60	1	5.0	528	78	41184
CA50	2	10.0	88	284	24992

Resumo do aço

AÇO	DIAM	C.TOTAL (m)	PESO + 10 % (kg)
CA50	8.0	332.5	144.3
CA60	5.0	420.9	71.4
<b>PESO TOTAL</b>			
CA50	144.3		
CA60	71.4		

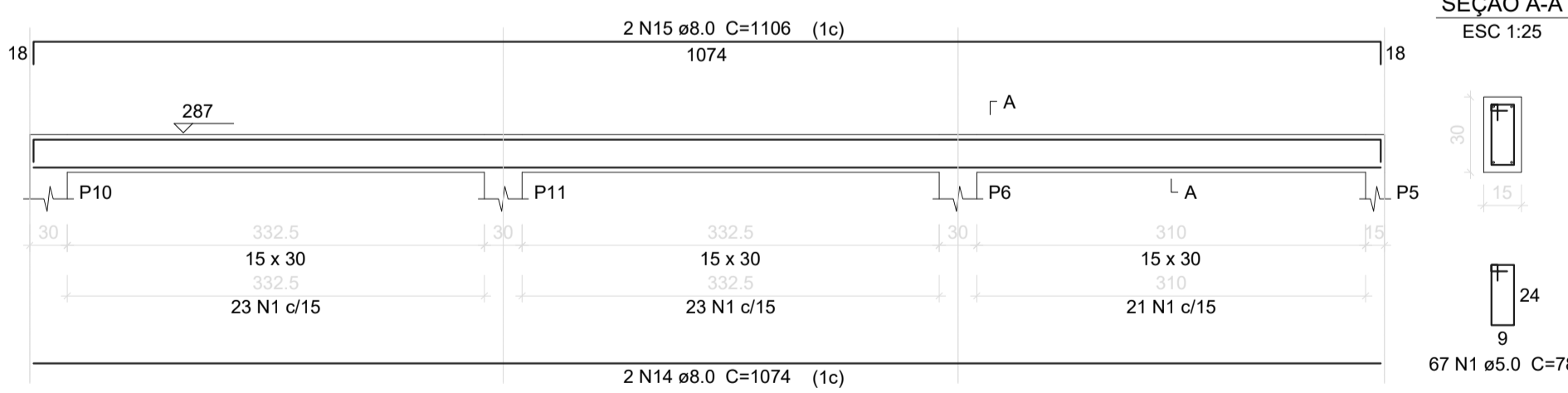
Vol. de concreto total (C-30) = 3.85 m³  
Área de forma total = 64.09 m²

Resumo do aço

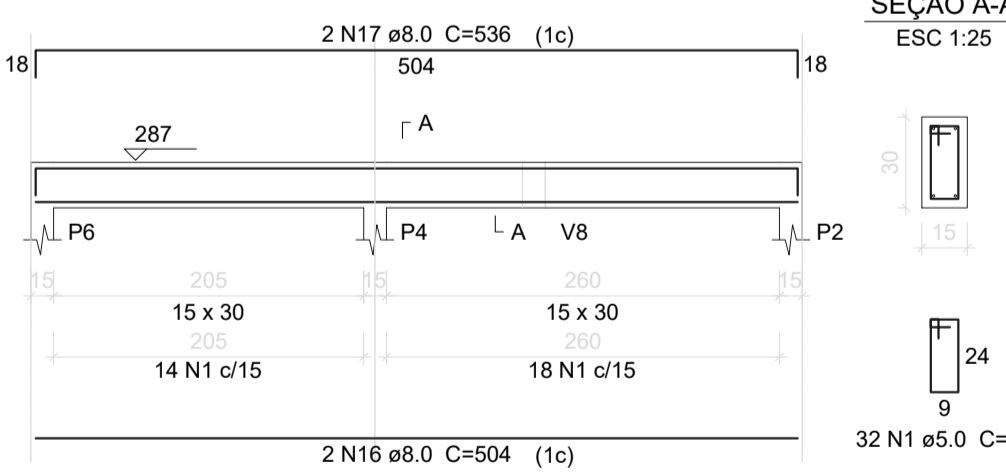
AÇO	DIAM	C.TOTAL (m)	PESO + 10 % (kg)
CA50	10.0	250	169.5
CA60	5.0	411.9	69.8
<b>PESO TOTAL</b>			
CA50	169.5		
CA60	69.8		

Vol. de concreto total (C-30) = 2.84 m³  
Área de forma total = 56.83 m²

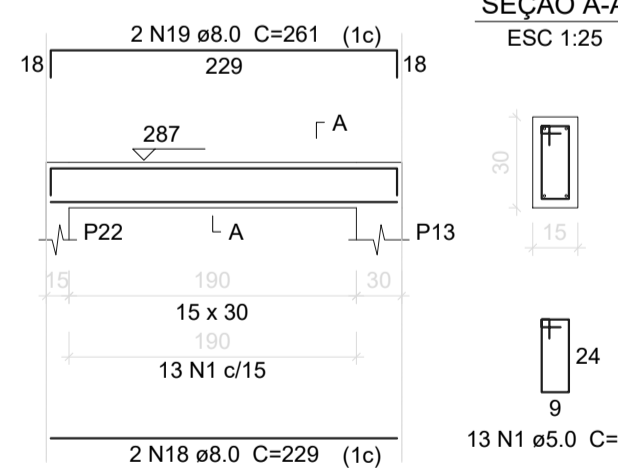
V5 ESC 1:50



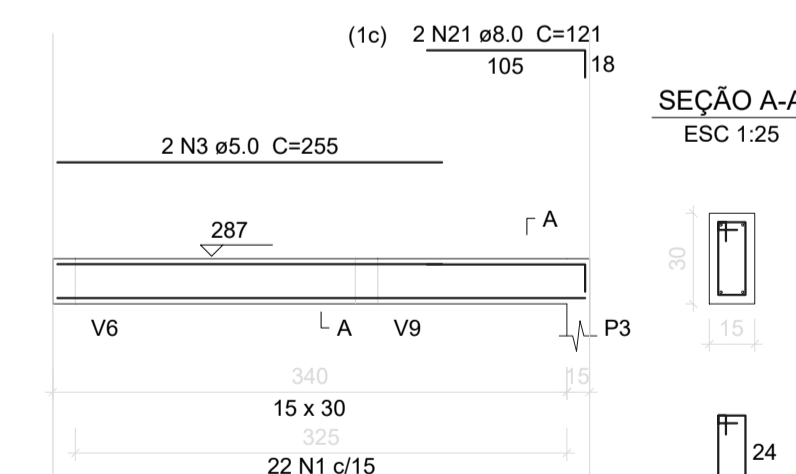
V6 ESC 1:50



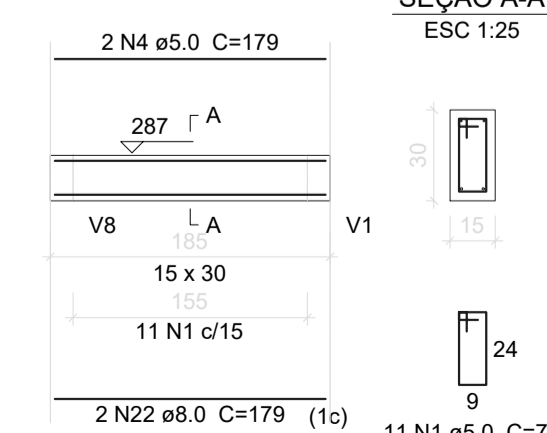
V7 ESC 1:50



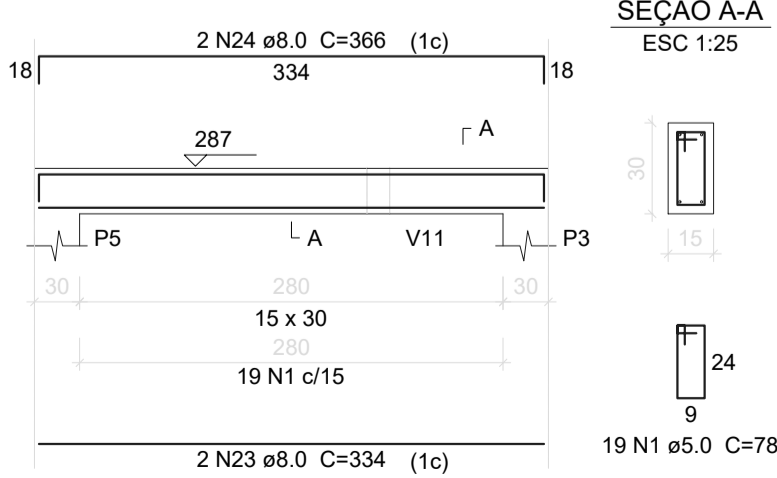
V8 ESC 1:50



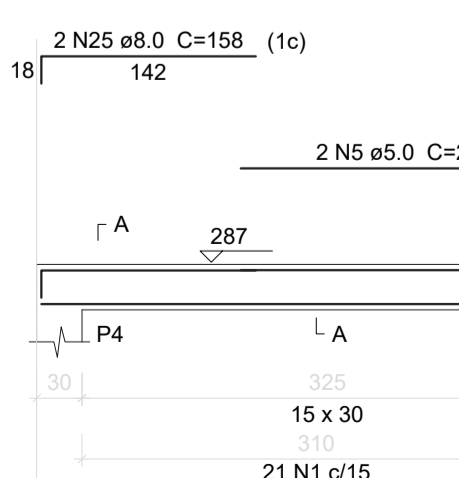
V9 ESC 1:50



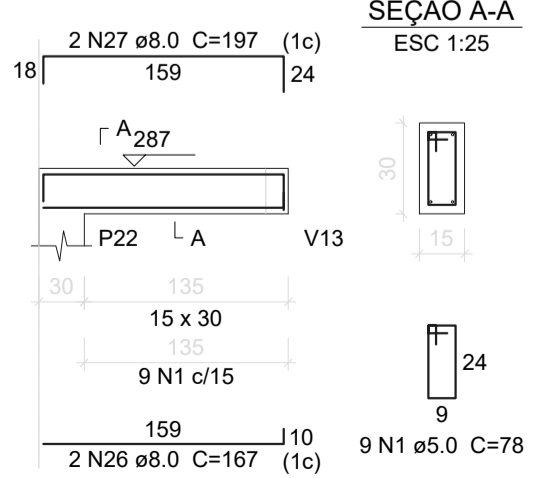
V10 ESC 1:50



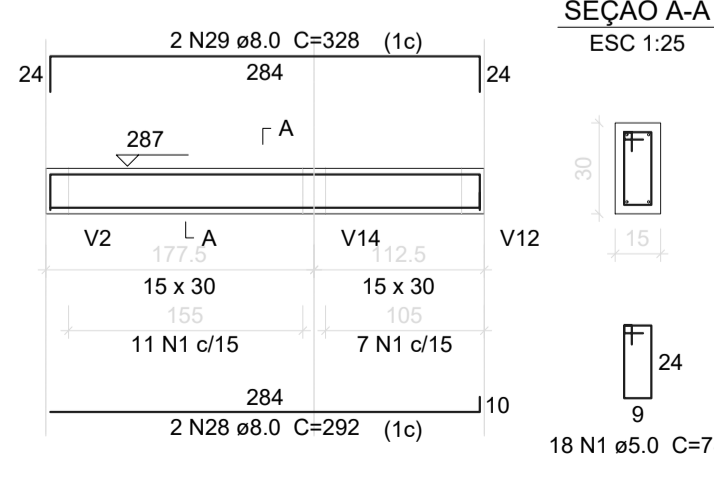
V11 ESC 1:50



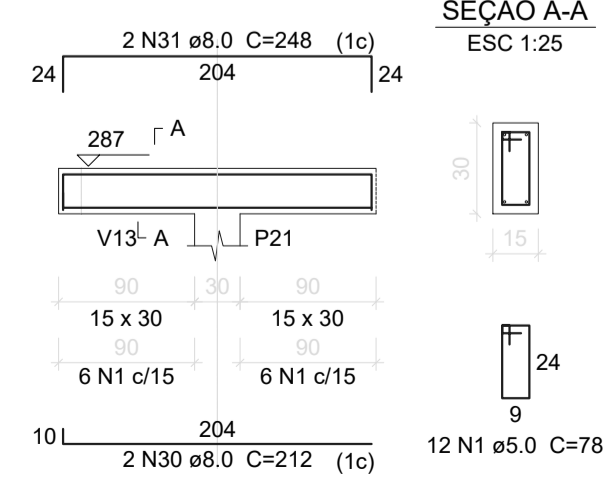
V12 ESC 1:50



V13 ESC 1:50



V14 ESC 1:50



É PROIBIDO A REPRODUÇÃO TOTAL OU PARCIAL DESTE PROJETO, SEM A AUTORIZAÇÃO POR ESCRITO PELO PROJETISTA - LEI Nº9610 (19/02/1998)

PROPRIETÁRIO <b>PREFEITURA MUNICIPAL DE BANDEIRANTE</b>	Área ampliação <b>146,40m²</b>
Assinatura do Proprietário	DATA Novembro/2024
RESPONSÁVEL TÉCNICO Engº Civil Giovane Miguel Kuhn - CREA/SC nº 186.990-8	UNIDADES <b>metros</b>
ESPECIFICAÇÃO <b>Fôrmas Térreo Vigas Térreo Pilares</b>	DESENHO Giovane
PROJETO <b>AMPLIAÇÃO CEI NOSSO SONHO</b>	
ENDEREÇO Rua Afonso Oliboni, Centro - Bandeirante/SC	PRANCHA <b>E3</b>
CONTATO Av. Santo Antônio, 1069 - Bandeirante/SC / (49) 3626-0012 / E-mail: gmc@bandeirante.sc.gov.br	