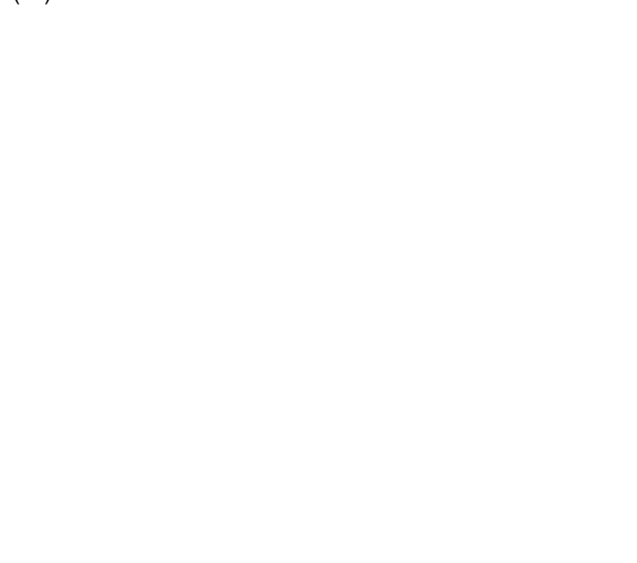
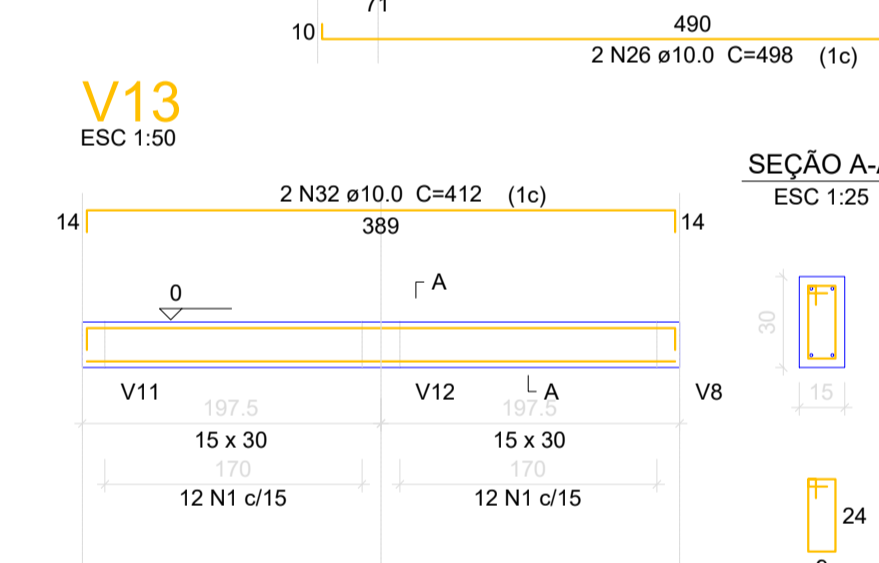
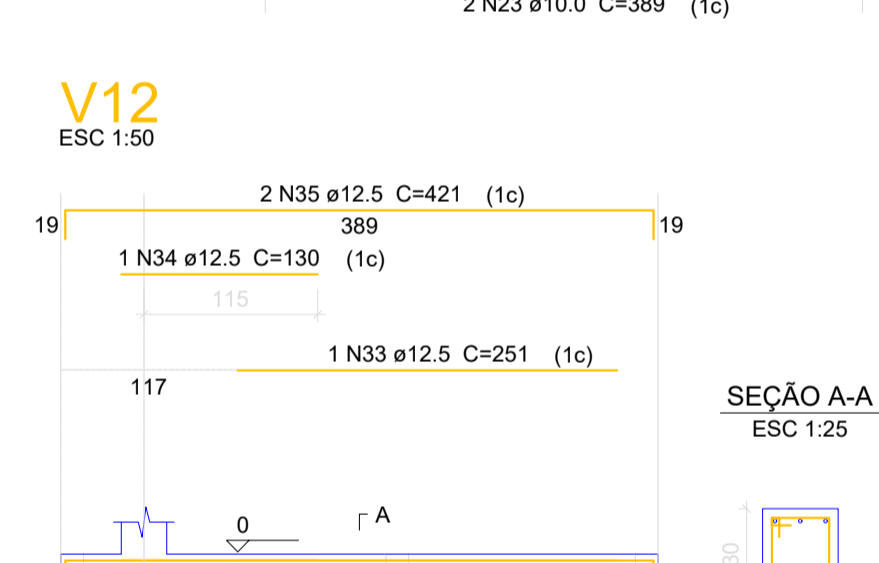
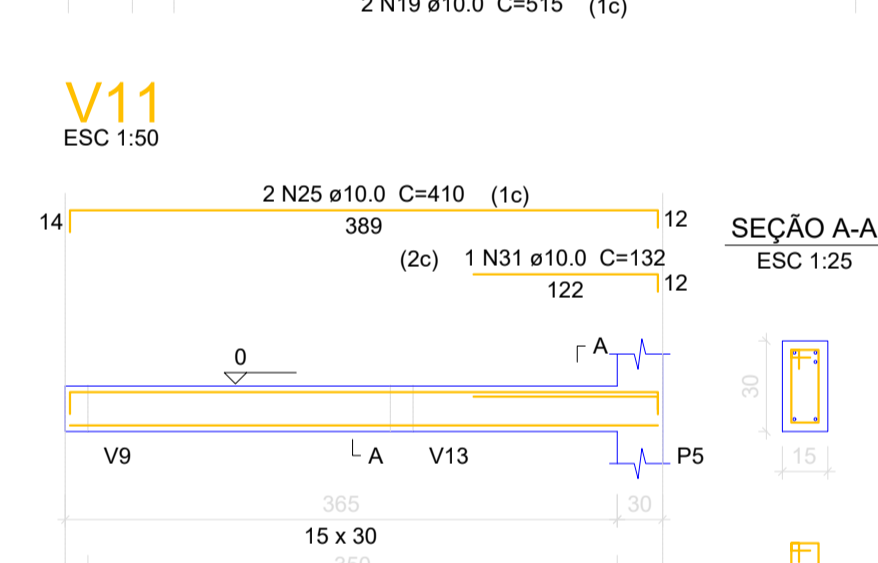
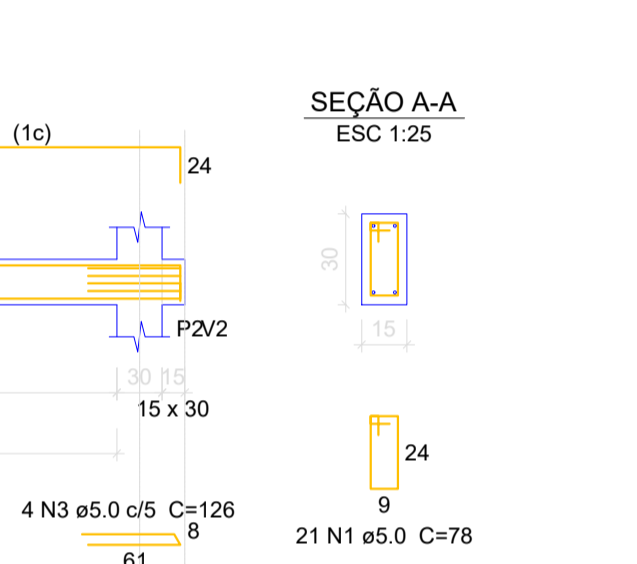
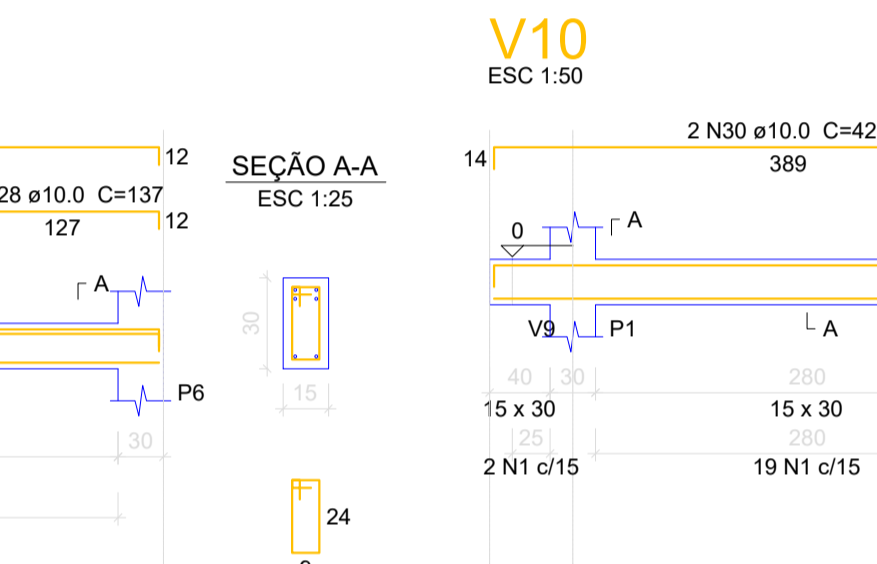
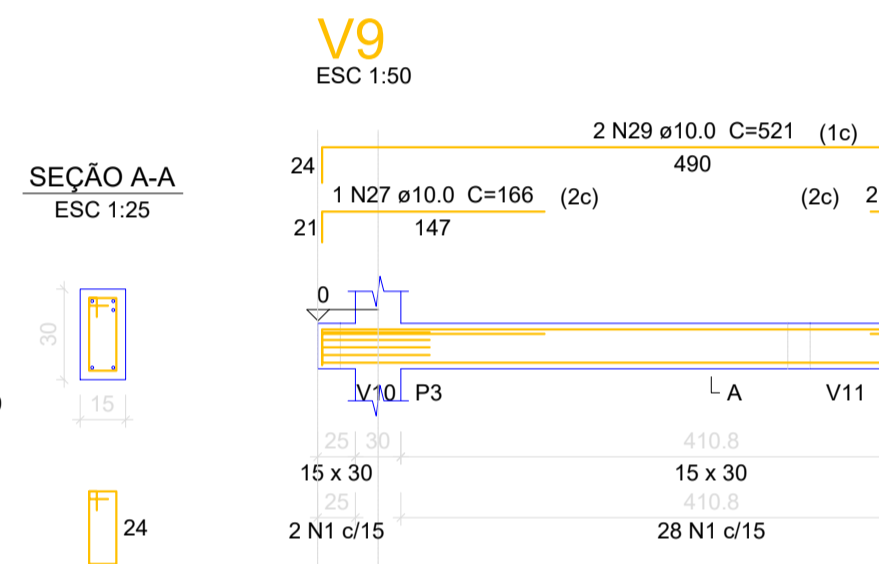
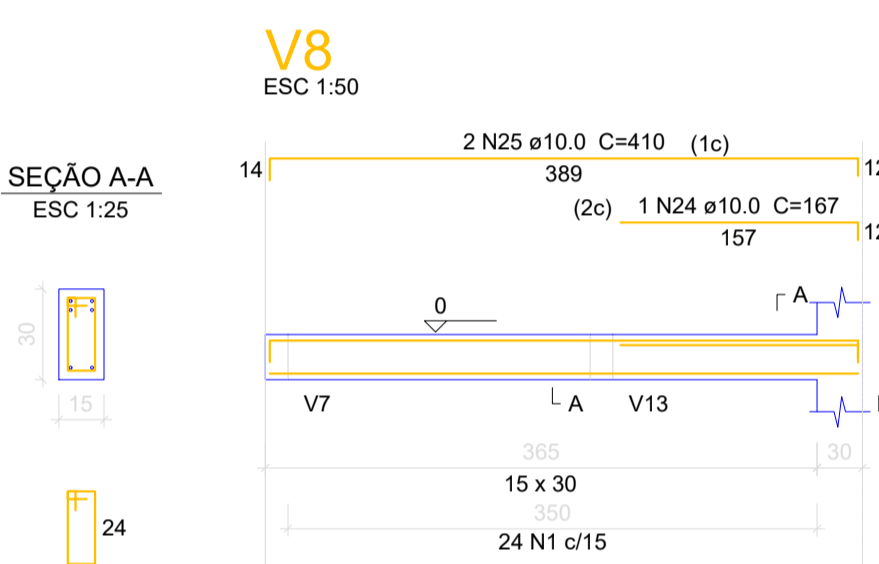
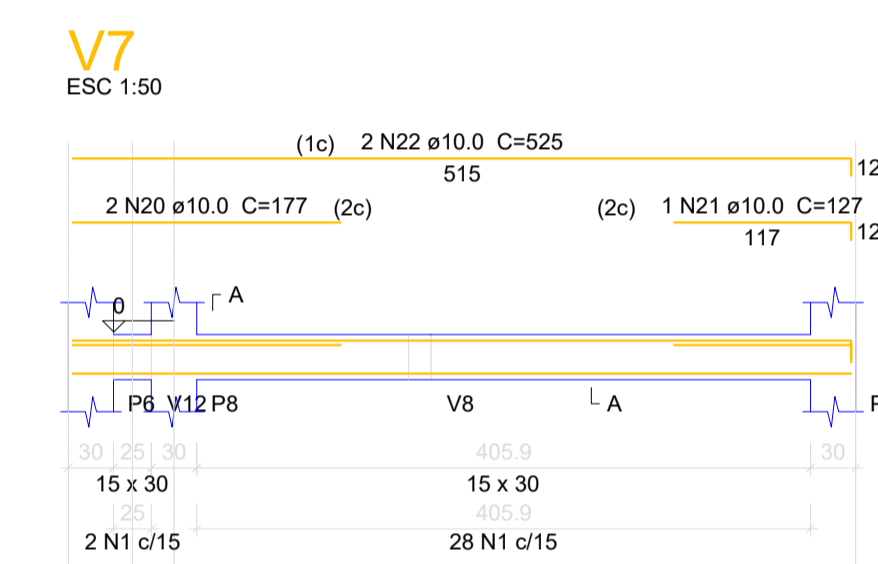
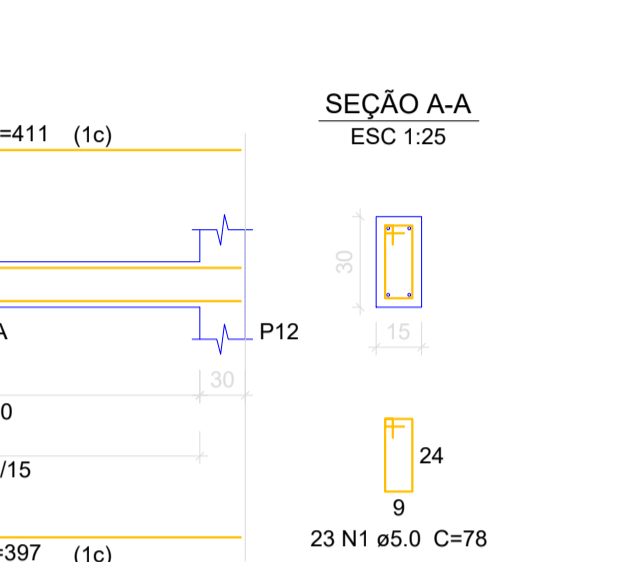
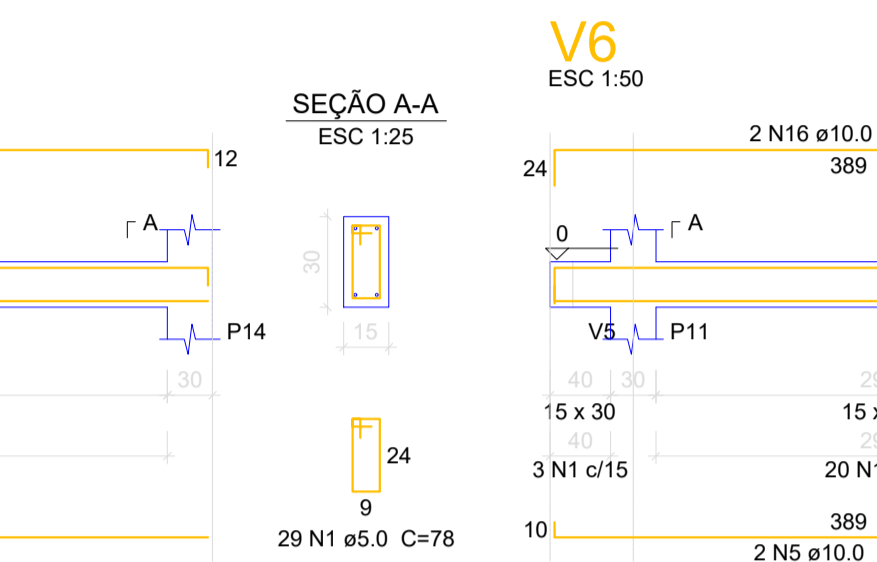
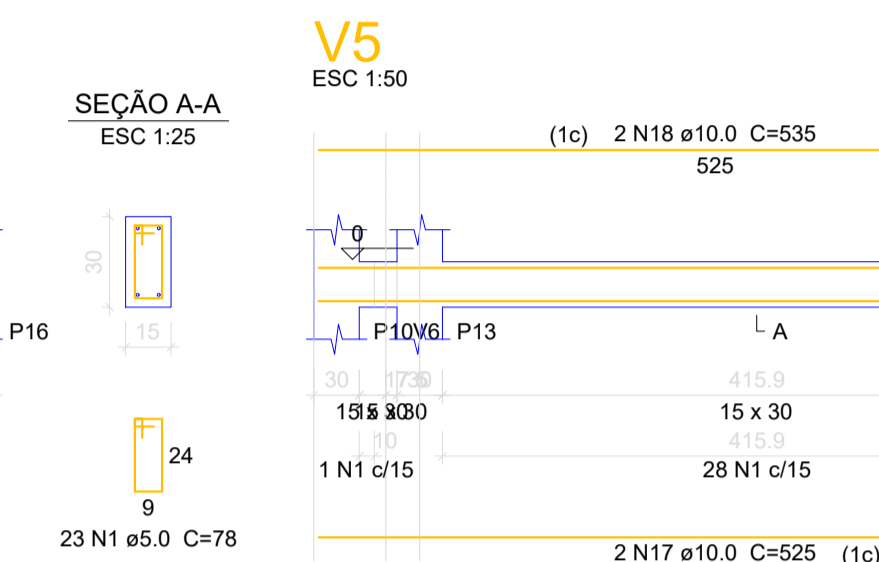
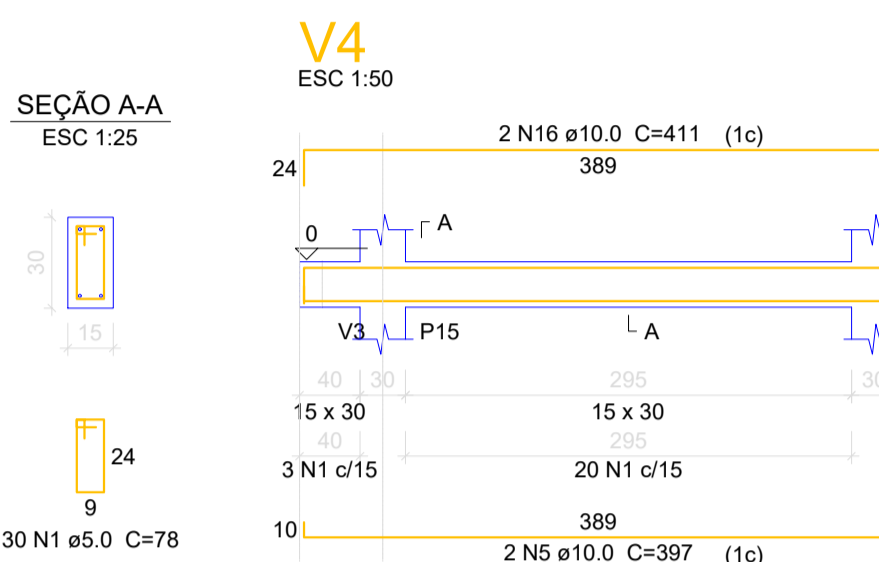
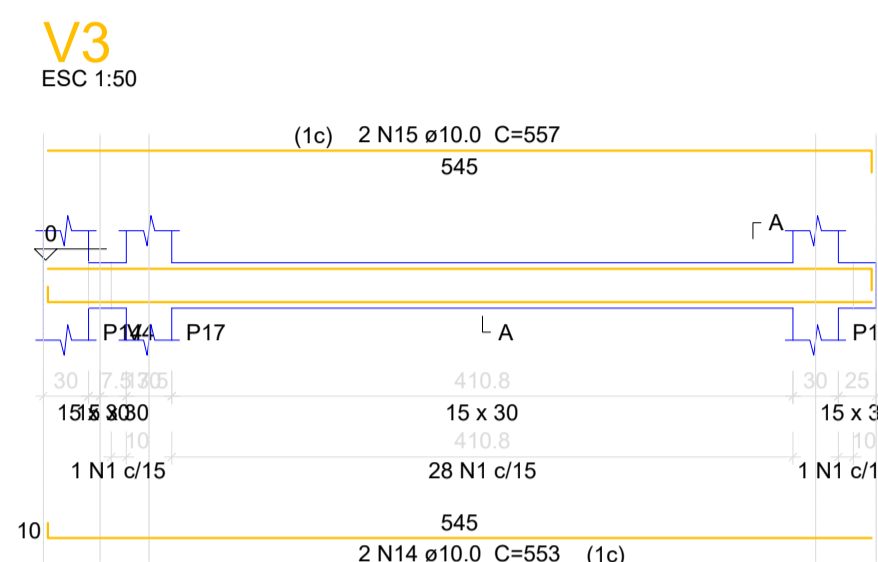
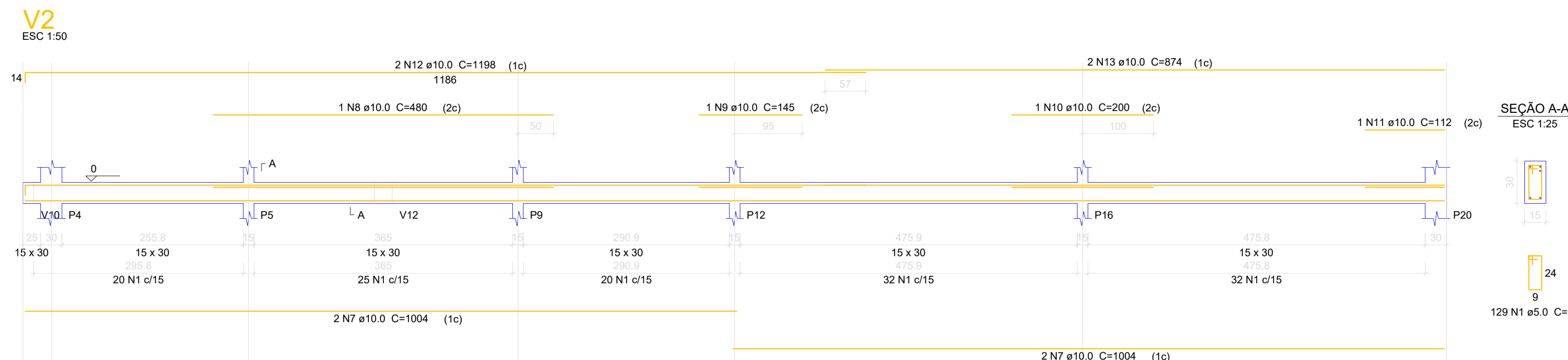
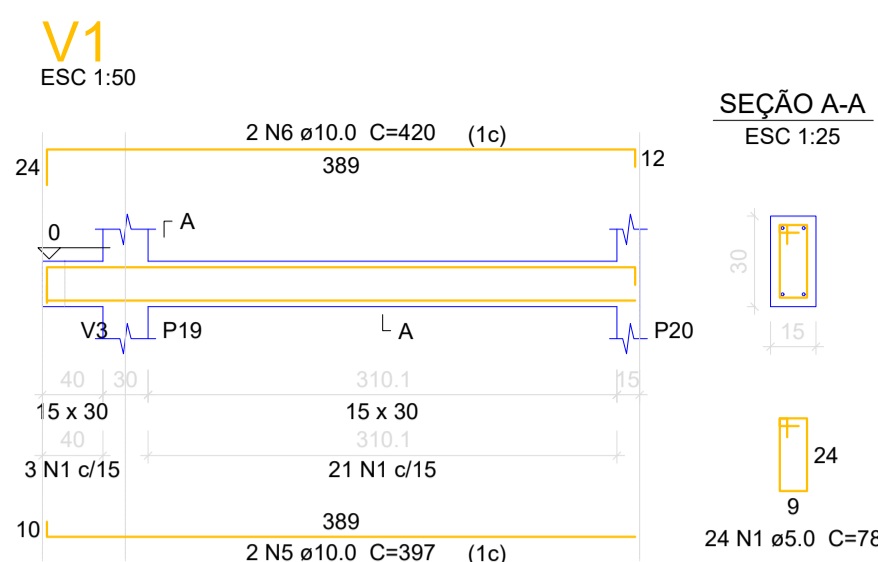


Vigas			
Nome	Seção (cm)	Elevação (cm)	Nível (cm)
V1	15x30	0	0
V2	15x30	0	0
V3	15x30	0	0
V4	15x30	0	0
V5	15x30	0	0
V6	15x30	0	0
V7	15x30	0	0
V8	15x30	0	0
V9	15x30	0	0
V10	15x30	0	0
V11	15x30	0	0
V12	25x30	0	0
V13	15x30	0	0

Características dos materiais		
f <sub>ok</sub> (kgf/cm <sup>2</sup> )	Ecs (kgf/cm <sup>2</sup> )	
300	260716	

Pilares			
Nome	Seção (cm)	Elevação (cm)	Nível (cm)
P1	15 x 30	0	0
P2	15 x 30	0	0
P3	15 x 30	0	0
P4	15 x 30	0	0
P5	15 x 30	0	0
P6	15 x 30	0	0
P7	25 x 30	0	0
P8	15 x 30	0	0
P9	15 x 30	0	0
P10	15 x 30	0	0
P11	15 x 30	0	0
P12	15 x 30	0	0
P13	15 x 30	0	0
P14	15 x 30	0	0
P15	15 x 30	0	0
P16	15 x 30	0	0
P17	15 x 30	0	0
P18	15 x 30	0	0
P19	15 x 30	0	0
P20	15 x 30	0	0

Legenda dos Pilares	
	Pilar que morre
	Pilar que passa
	Pilar que nasce
	Pilar com mudança de seção



Forma do pavimento Baldrame

escala 1:50

Relação do aço

AÇO	N	DIAM	Q	UNIT (cm)	C.TOTAL (cm)
CA60	1	5.0	411	78	32058
	2	5.0	4	146	584
	3	5.0	4	126	504
	4	5.0	27	98	2646
CA50	5	10.0	8	397	3176
	6	10.0	2	420	840
	7	10.0	4	1004	4016
	8	10.0	1	480	480
	9	10.0	1	145	145
	10	10.0	1	200	200
	11	10.0	1	112	112
	12	10.0	2	1198	2396
	13	10.0	2	874	1748
	14	10.0	2	553	1106
	15	10.0	2	557	1114
	16	10.0	4	411	1644
	17	10.0	2	525	1050
	18	10.0	2	535	1070
	19	10.0	2	515	1030
	20	10.0	2	177	354
	21	10.0	1	127	127
	22	10.0	2	525	1050
	23	10.0	8	389	3112
	24	10.0	1	167	167
	25	10.0	4	410	1640
	26	10.0	2	498	996
	27	10.0	1	166	166
	28	10.0	2	137	274
	29	10.0	2	521	1042
	30	10.0	2	422	844
	31	10.0	1	132	132
	32	10.0	2	412	824
	33	12.5	1	251	251
	34	12.5	1	130	130
	35	12.5	2	421	842

Resumo do aço

AÇO	DIAM	C.TOTAL (m)	PESO + 10% (kg)
CA50	10.0	308.6	209.3
	12.5	12.3	13
CA60	5.0	358	60.7
PESO TOTAL			
CA50		222.2	
CA60		60.7	

Vol. de concreto total (C-30) = 3.39 m<sup>3</sup>  
Área de forma total = 54.89 m<sup>2</sup>

É PROIBIDO A REPRODUÇÃO TOTAL OU PARCIAL DESTA OBRA, SEM A AUTORIZAÇÃO POR ESCRITO PELO PROJETISTA - LEI Nº9610 (19/02/1998)

PROPRIETÁRIO <b>PREFEITURA MUNICIPAL DE BANDEIRANTE</b>		Área total <b>79,33m<sup>2</sup></b>
Assinatura do Proprietário		DATA <b>Abril/2024</b>
RESPONSÁVEL TÉCNICO <b>Engº Civil Giovane Miguel Kuhn - CREA/SC nº 186.990-8</b>		UNIDADES <b>metros</b>
ESPECIFICAÇÃO <b>Estrutural</b>		DESENHO <b>Giovane</b>
PROJETO <b>Construção da 2ª etapa do Galpão Comunitário no Campo Municipal</b>		
ENDEREÇO <b>Rua Flor da Serra, centro - Bandeirante/SC</b>		PRANCHA <b>2/4</b>
CONTATO <b>Av. Santo Antônio, 1069 - Bandeirante/SC / (49) 3626-0012 / E-mail: gmc@bandeirante.sc.gov.br</b>		