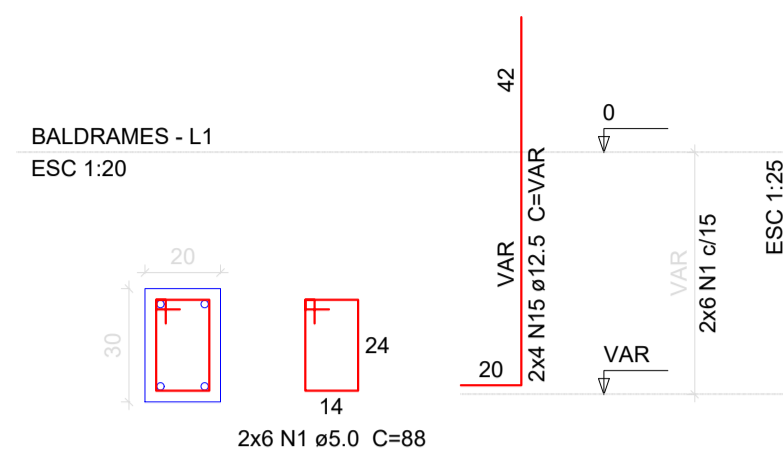
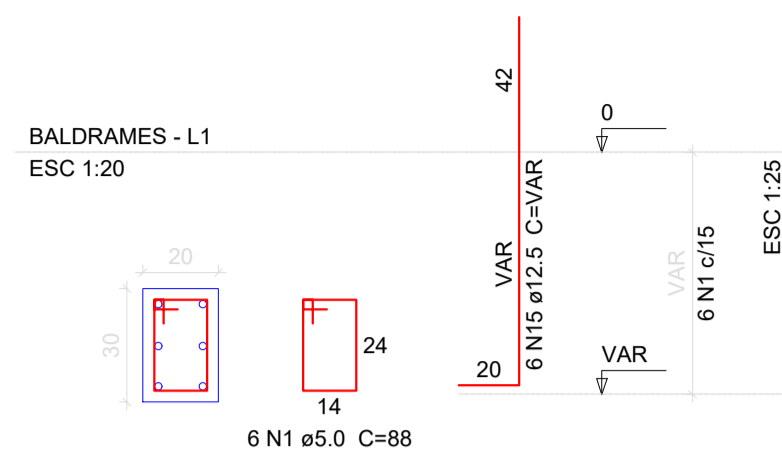


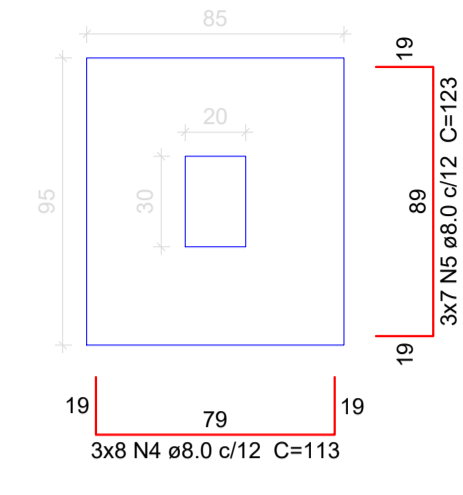
P1=P3



P4

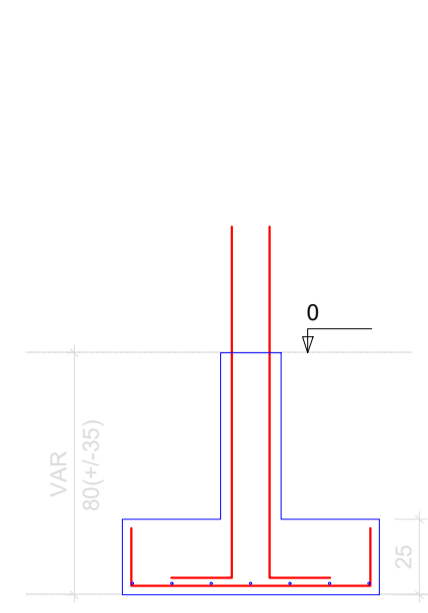


S1=S3=S4
PLANTA
ESC 1:25

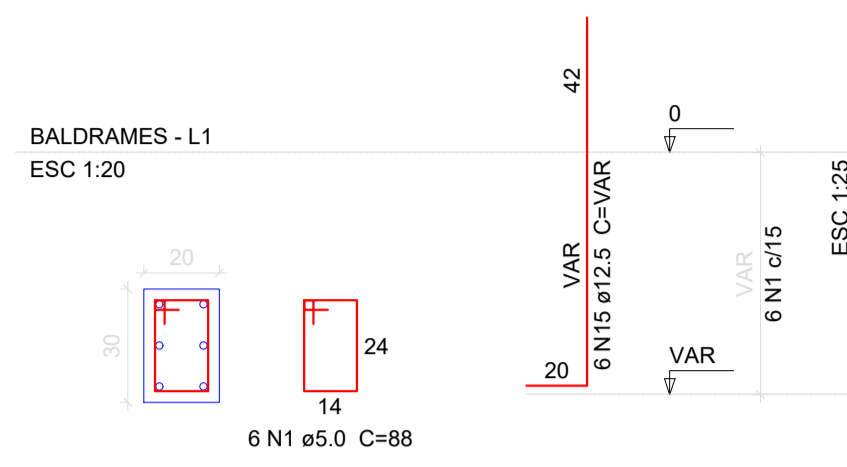


Solo com capacidade de suporte > 2.50 kgf/cm²
Solo compactado sobre a sapata
peso específico > 1600.00 kgf/m³

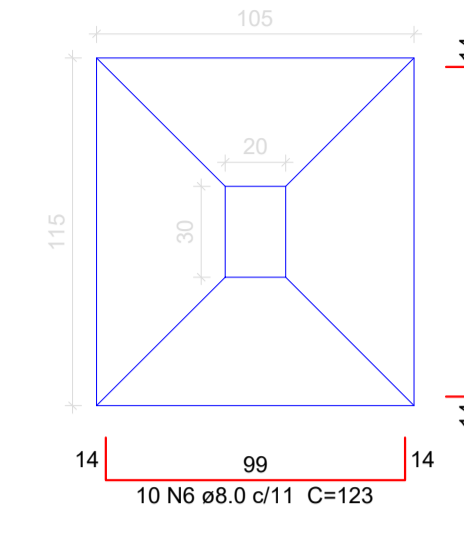
CORTE
ESC 1:25



P2=P5

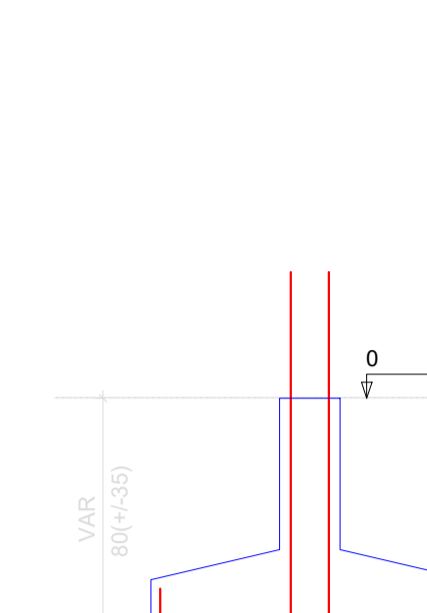


S2=S5
PLANTA
ESC 1:25



Solo com capacidade de suporte > 2.50 kgf/cm²
Solo compactado sobre a sapata
peso específico > 1600.00 kgf/m³

CORTE
ESC 1:25



Relação do aço

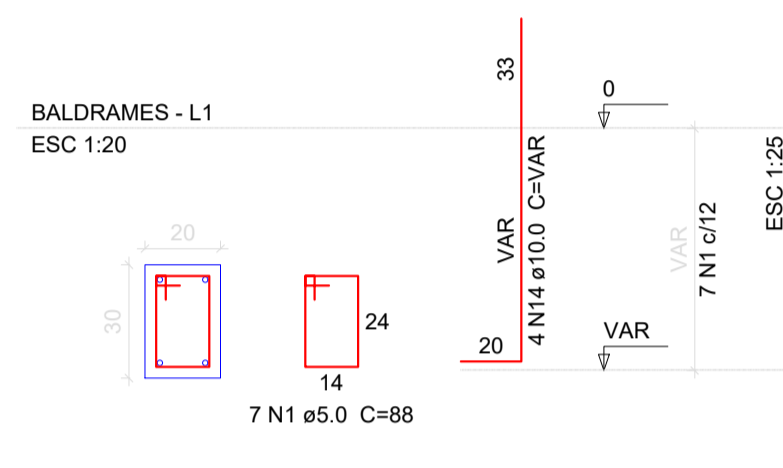
CAÇO	N	DIAM	Q	UNIT (cm)	C.TOTAL (cm)
S4	2xS5				S6
S9	3xS10				
CA60	1	5.0	37	88	3256
	2	5.0	12	29	348
	3	5.0	28	76	2128
CA50	4	8.0	24	113	2712
	5	8.0	21	123	2583
	6	8.0	20	123	2460
	7	8.0	18	133	2394
	8	8.0	8	118	944
	9	8.0	7	128	896
	10	8.0	18	83	1494
	11	8.0	18	98	1764
	12	8.0	6	93	558
	13	8.0	6	103	618
	14	10.0	20	VAR	VAR
	15	12.5	28	VAR	VAR

Resumo do aço

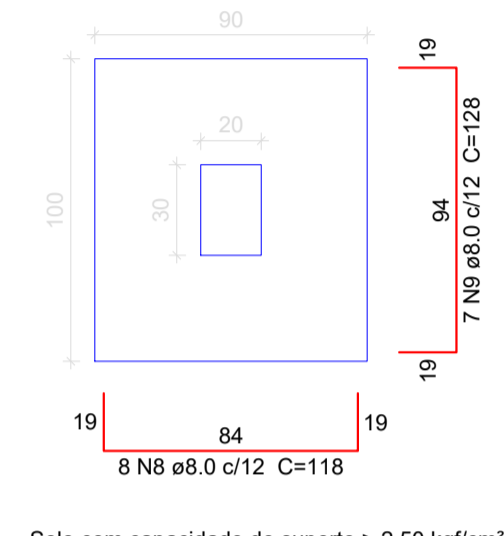
CAÇO	DIAM	C.TOTAL (m)	PESO + 10 % (kg)
CA50	8.0	164.3	71.3
	10.0	26.2	17.8
	12.5	39	41.2
CA60	5.0	57.4	9.7
PESO TOTAL			
CA50	130.3		
CA60	9.7		

Vol. de concreto total (C-30) = 2.25 m³
Área de forma total = 15.6 m²

P6

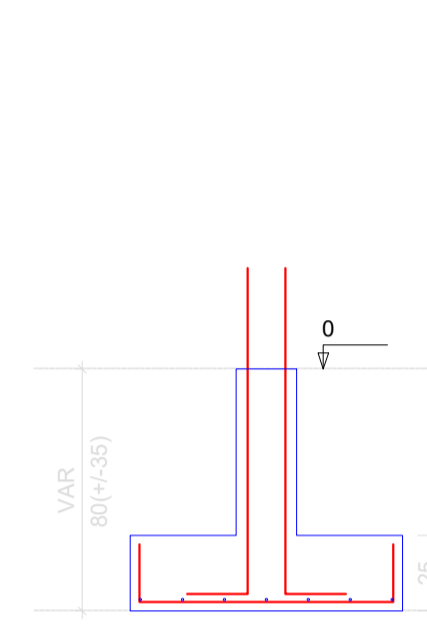


S6
PLANTA
ESC 1:25

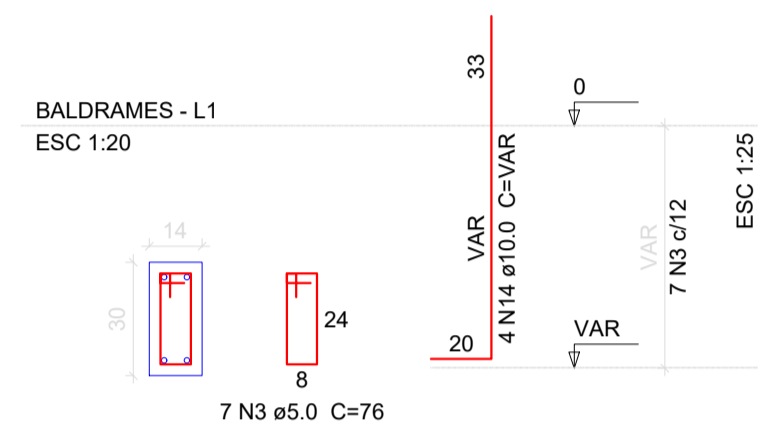


Solo com capacidade de suporte > 2.50 kgf/cm²
Solo compactado sobre a sapata
peso específico > 1600.00 kgf/m³

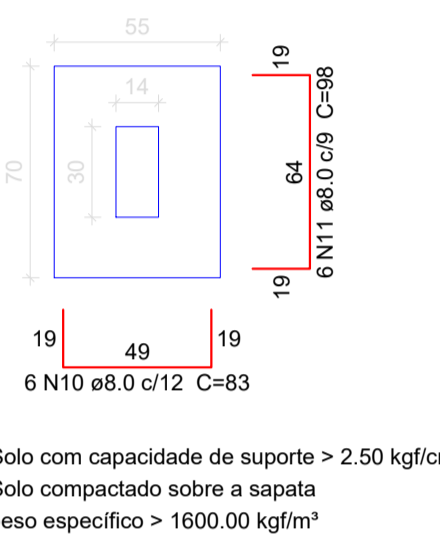
CORTE
ESC 1:25



P7=P8=P10

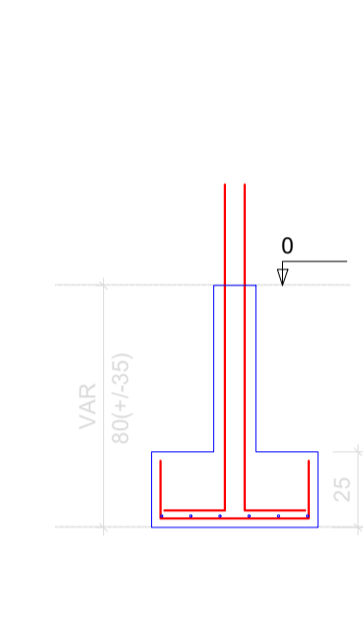


S7=S8=S10
PLANTA
ESC 1:25

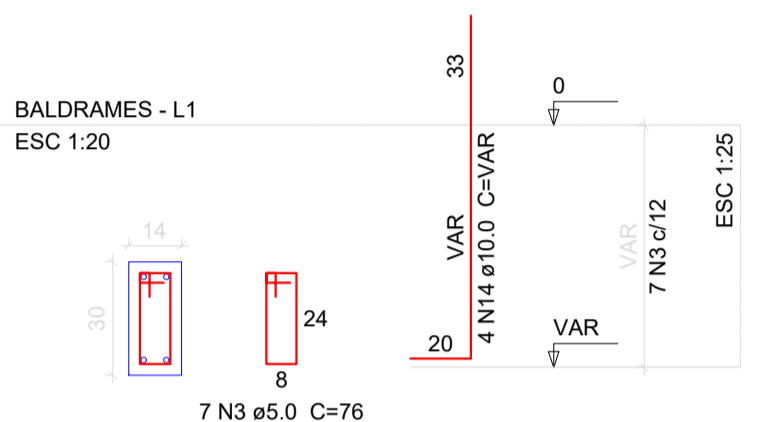


Solo com capacidade de suporte > 2.50 kgf/cm²
Solo compactado sobre a sapata
peso específico > 1600.00 kgf/m³

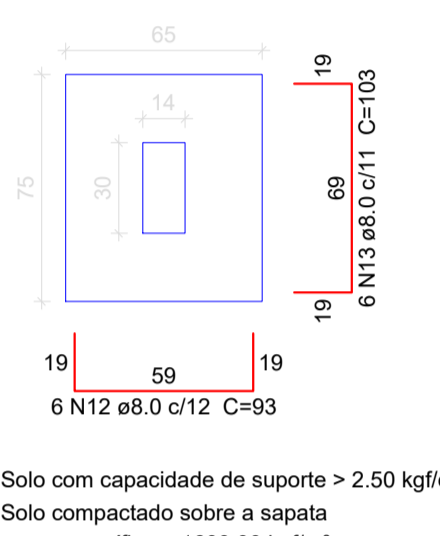
CORTE
ESC 1:25



P9

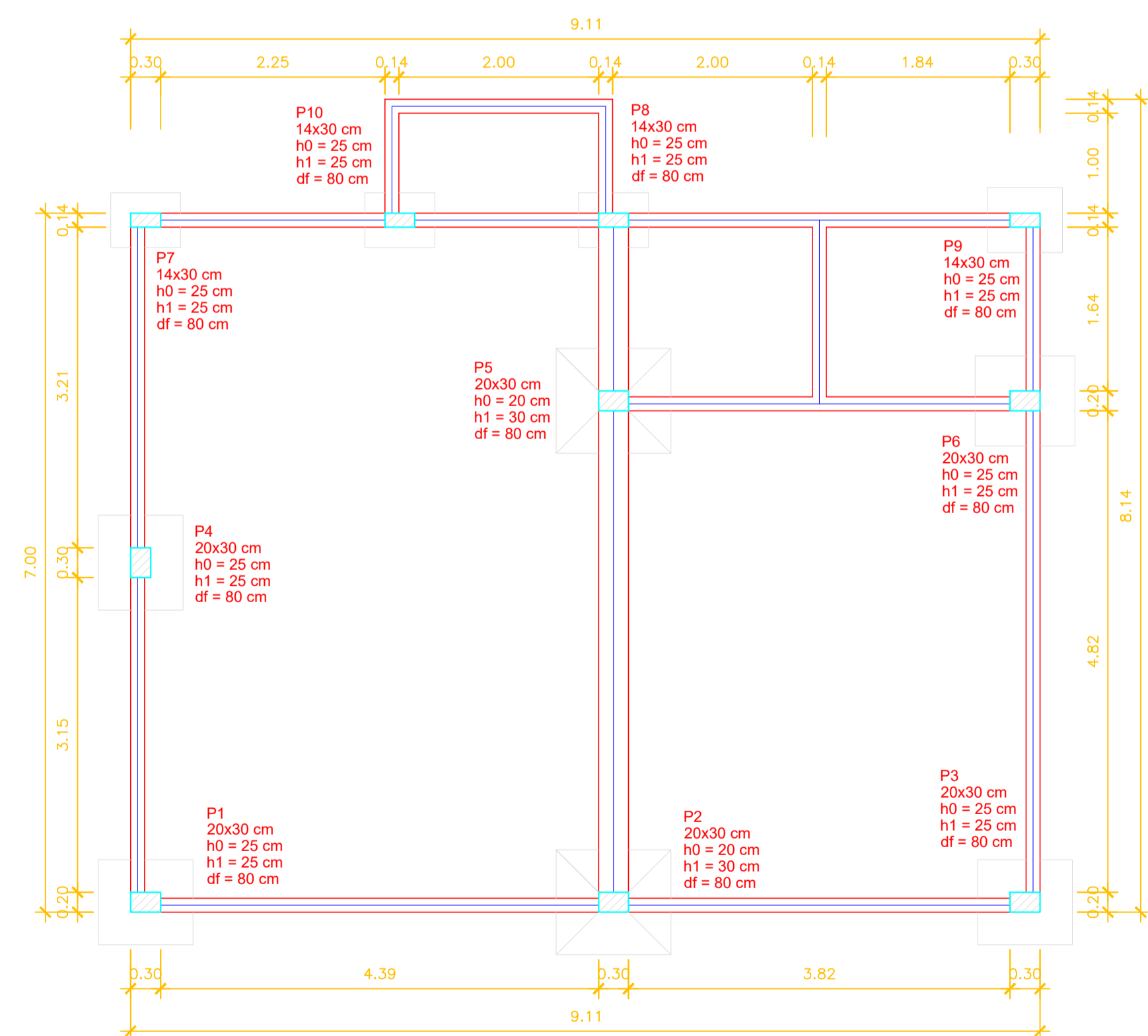
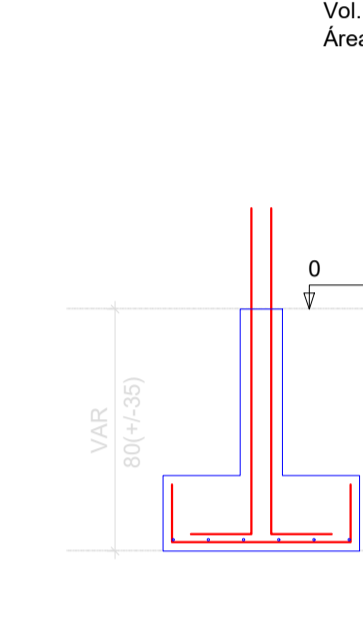


S9
PLANTA
ESC 1:25

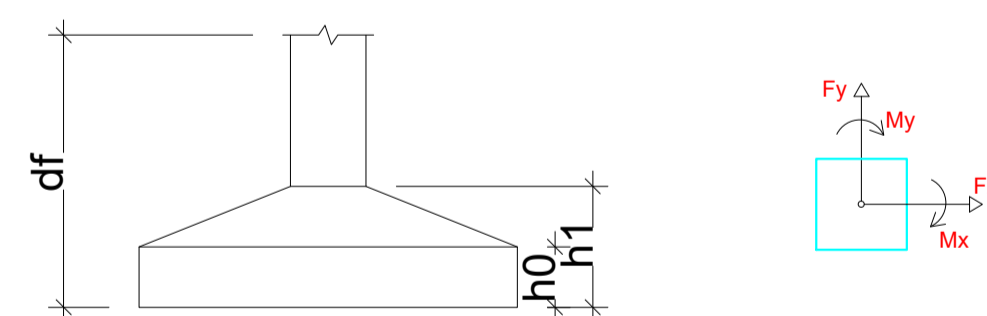


Solo com capacidade de suporte > 2.50 kgf/cm²
Solo compactado sobre a sapata
peso específico > 1600.00 kgf/m³

CORTE
ESC 1:25



Nome	Seção (cm)	Pilar						Fundação					
		Carga Máx. (tf)	Carga Min. (tf)	Mx (kgf.m)	My (kgf.m)	Fx (tf)	Fy (tf)	Lado B (cm)	Lado H (cm)	h0 / ha (cm)	h1 / hb (cm)	df (cm)	
P1	20x30	8.2	6.2	200	600	2.3	0.9	85	95	25	25	80	
P2	20x30	16.2	11.9	1100	300	0.5	4.4	105	115	20	30	80	
P3	20x30	10.1	7.6	400	500	1.5	1.9	85	95	25	25	80	
P4	20x30	12.7	9.2	500	300	0.7	0.6	85	95	25	25	80	
P5	20x30	17.9	12.9	1300	600	2.2	4.1	105	115	20	30	80	
P6	20x30	12.4	9.1	800	700	2.3	2.2	90	100	25	25	80	
P7	14x30	3.9	3.0	300	300	0.7	0.9	55	70	25	25	80	
P8	14x30	3.9	3.1	100	300	0.8	0.3	55	70	25	25	80	
P9	14x30	2.7	2.1	200	300	0.9	0.3	65	75	25	25	80	
P10	14x30	6.0	4.2	200	100	0.2	0.6	55	70	25	25	80	



Forma do pavimento Baldrames
escala 1:50

PROJETO ESTRUTURAL	ESCALA INDICADA
DESCRIÇÃO Fôrma Baldrames Sapatas	PRANCHA 01/06
RESPONSÁVEL TÉCNICO: GIOVANE MIGUEL KUHN CREA/SC 186.990-8	ARQUIVO 00000
PROPRIETÁRIOS: PREFEITURA MUNICIPAL DE BANDEIRANTE	DATA ABRIL/2024
	ÁREA 70,29m ²