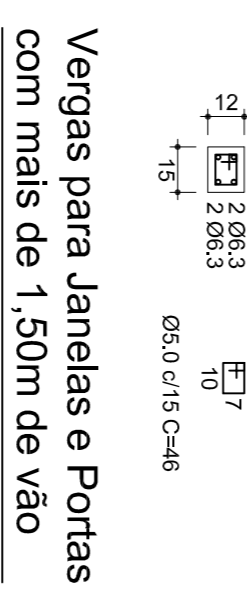


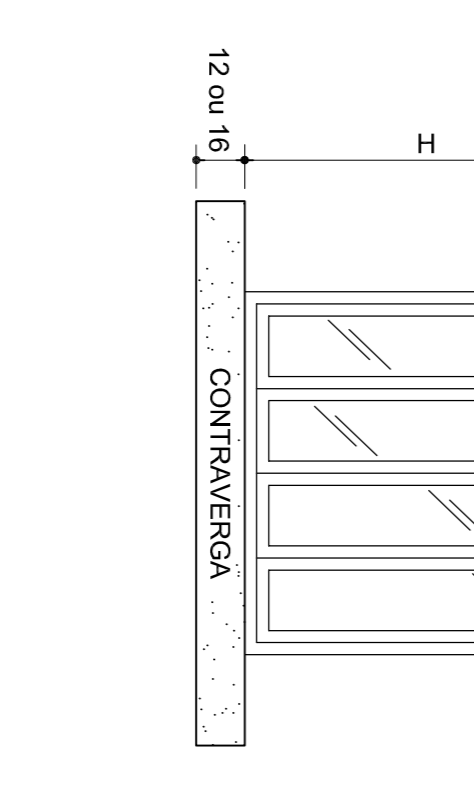
34.835

**Formas Fundação (Nível 15)**  
Sapatas / Pilares-Colarinho / Vigas Baldrame  
Escala 1:50

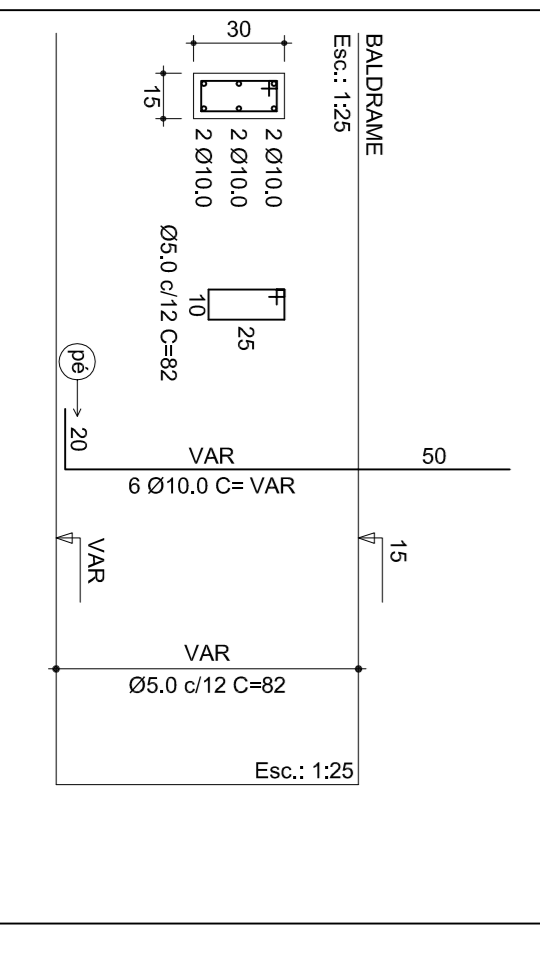
**Vergas para Portas e Contravergas para Janelas de até 1,50m de vão**  
Escala: 1:25



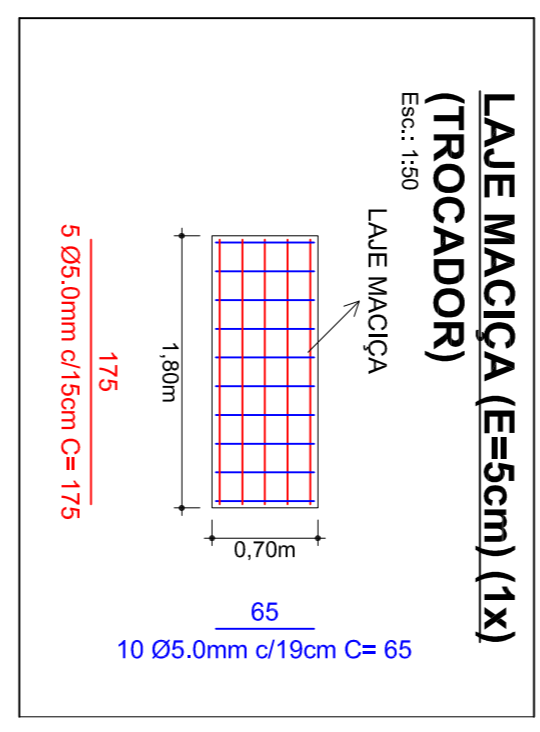
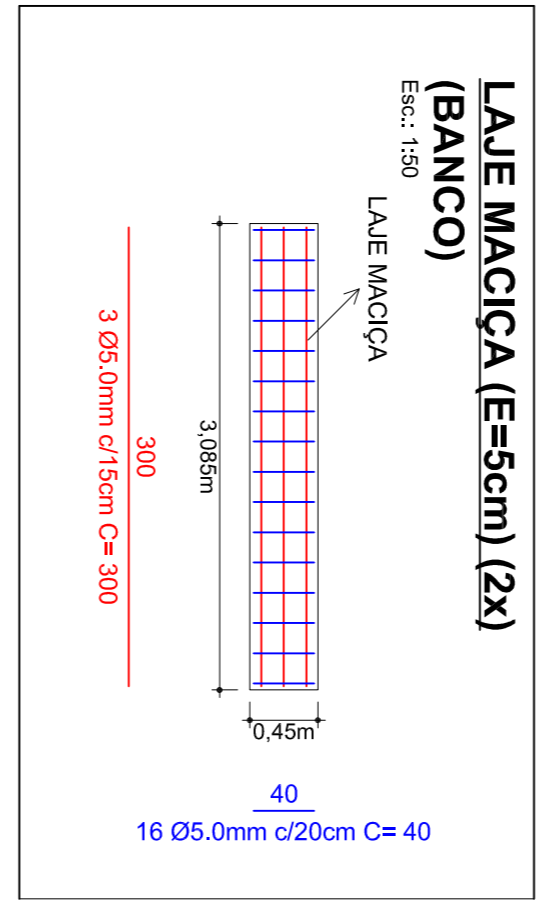
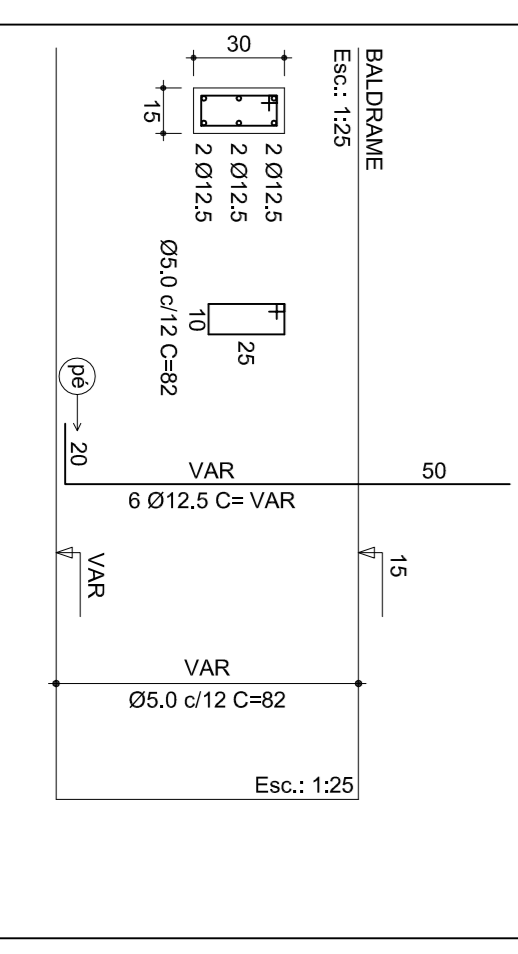
**Contravergas para Janelas com mais de 1,50m de vão**  
Escala: 1:25



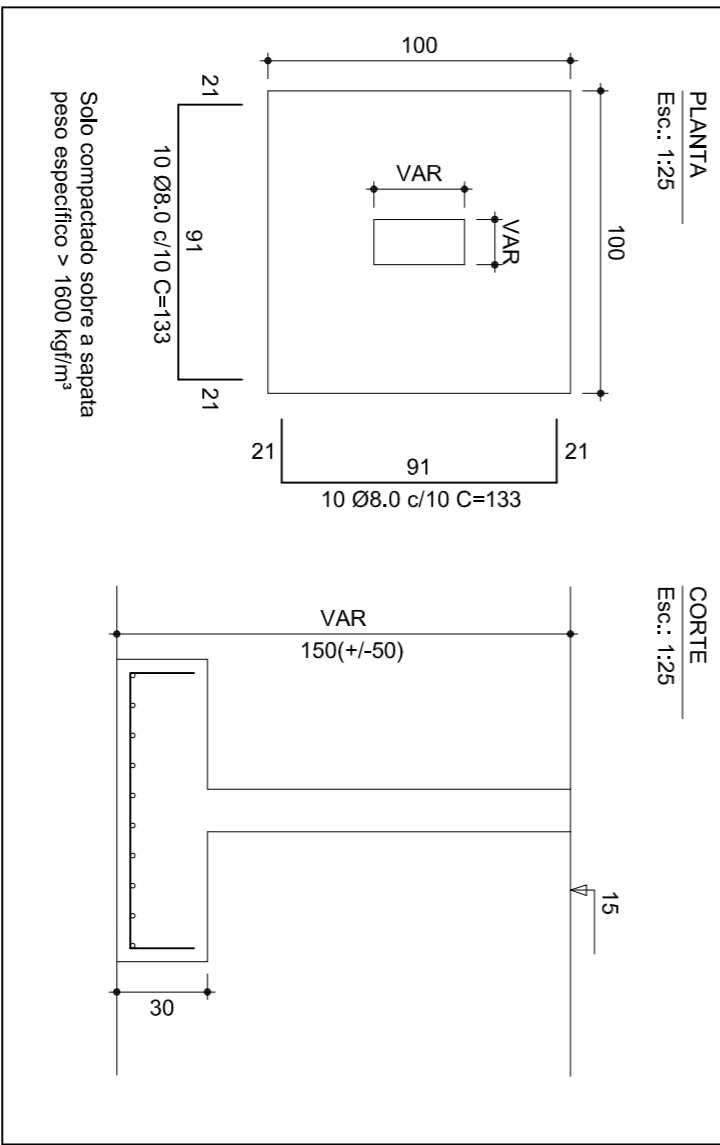
**PILARES - COLARINHO**  
P1=P3=P4=P6=P9=P10=P11=P12=P13=P14  
P23=P23=P25=P37=P38=P40=P41=P44=P45  
P1, P3, P4, P6, P10, P11, P14, P23 e P38 - Aumentar o "pe" de 20cm para fôton



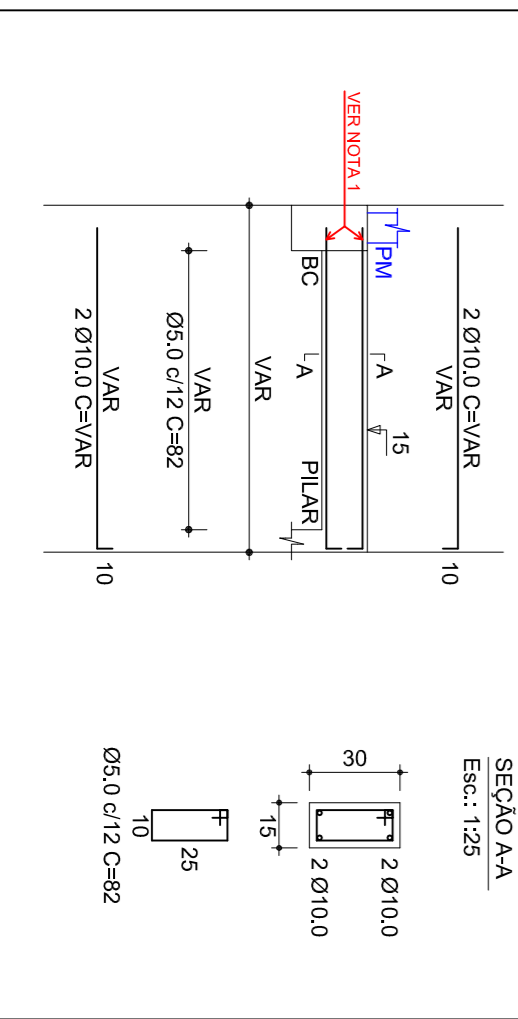
**PILARES - COLARINHO**  
P2=P5=P7=P8=P15=P16=P17=P18=P19=P20  
P21=P22=P24=P25=P26=P27=P28=P29=P30  
P31=P32=P34=P36=P39=P42=P43  
P27 e P39 - Aumentar o "pe" de 20cm para fôton



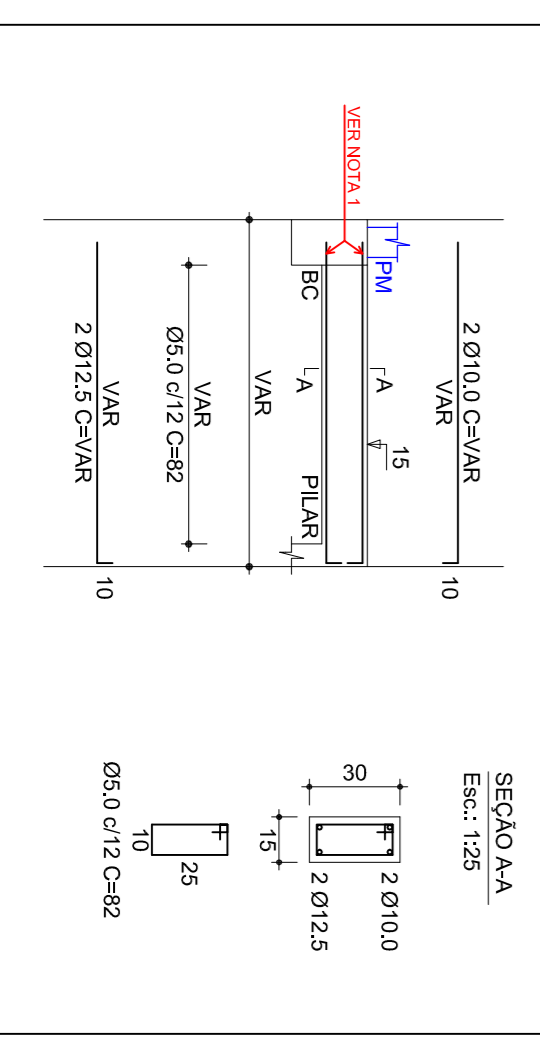
**SAPATAS**  
S1=S2=S3=S4=S5=S6=S7=S8=S9=S10=S11=S12  
S13=S14=S15=S16=S17=S18=S19=S20=S21=S22  
S24=S25=S26=S27=S28=S29=S30=S31=S33=S35  
S36=S37=S38=S39=S40=S41=S42=S43=S44



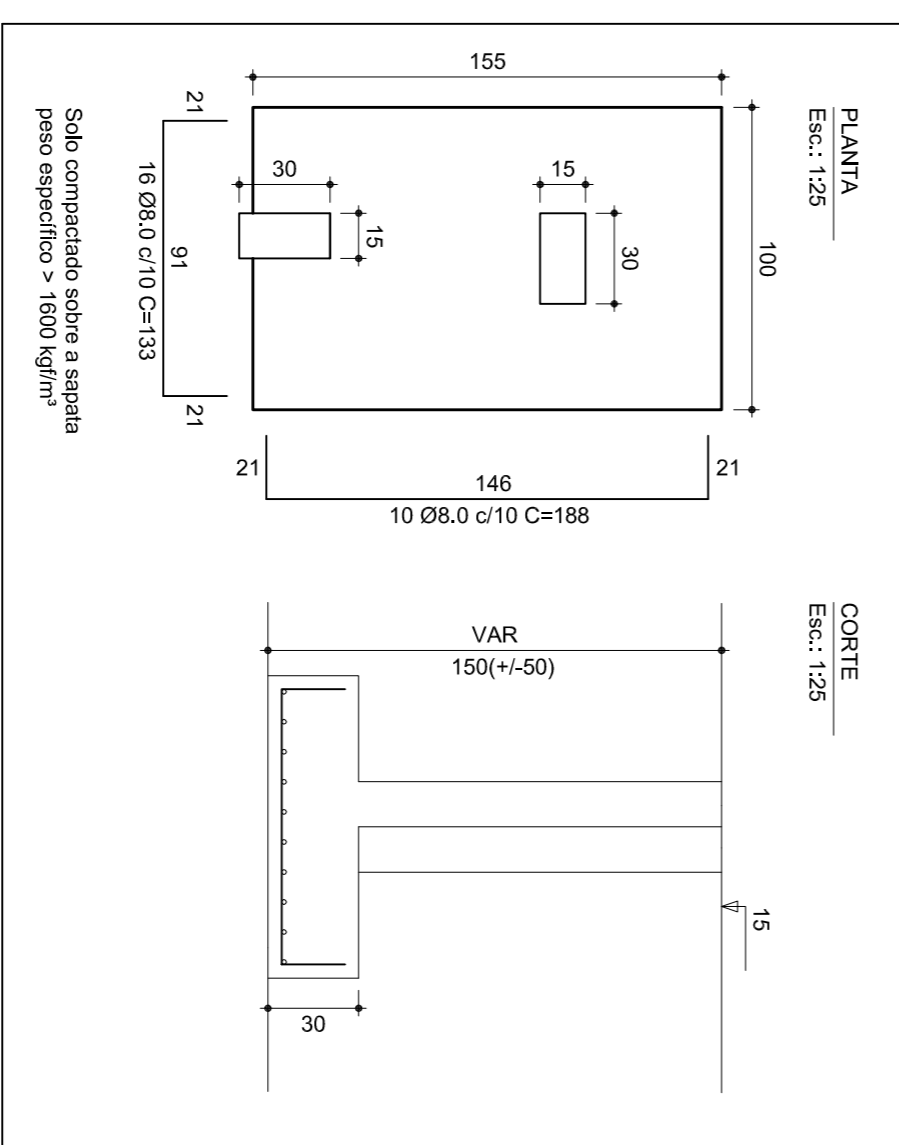
**VIGAS BALDRAME (NÍVEL 15)**  
VB1=VB2=VB4=VB5=VB6=VB10=VB12=VB13  
VB14=VB16=VB17=VB22=VB25=VB27=VB28  
VB29=VB30



**VIGAS BALDRAME (NÍVEL 15)**  
VB3=VB7=VB8=VB9=VB11=VB15=VB18  
VB19=VB20=VB21=VB23=VB24=VB26



**SAPATA S23**



**Características dos materiais**

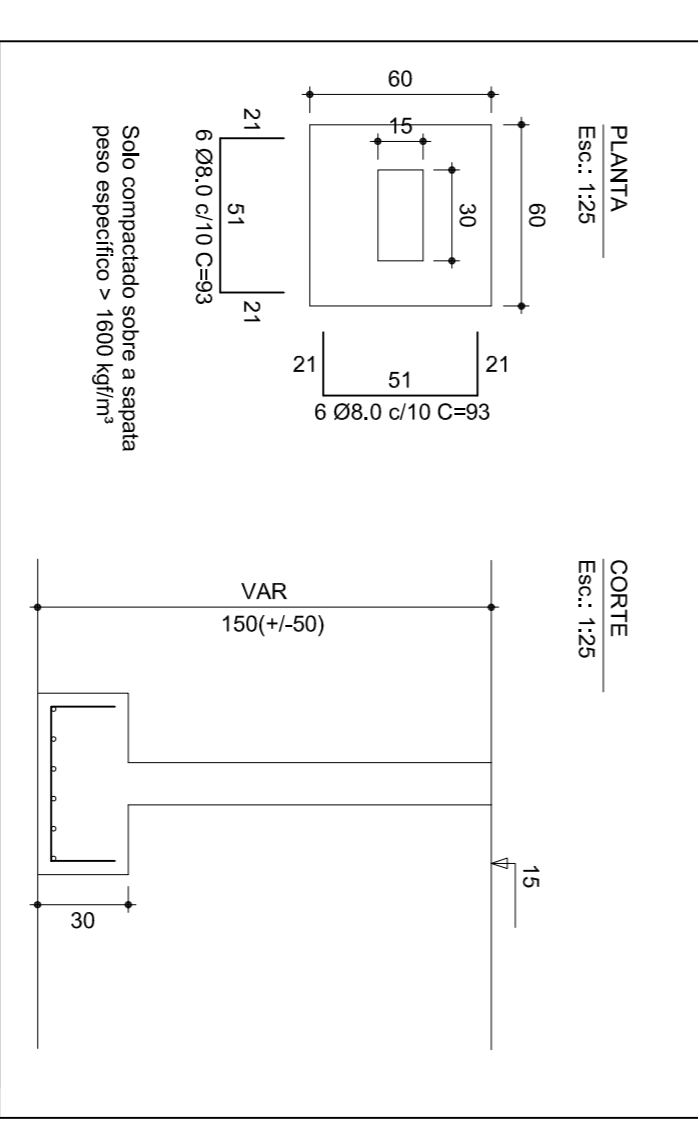
**CONCRETO**  
Fck 250 kgf/cm²

**AÇO**  
CA 50 - Ø8.0  
CA 50 - Ø10.0  
CA 50 - Ø12.5  
CA 60 - Ø5.0

**NOTA 1**

AS FERRAGENS DAS VIGAS BALDRAMES QUE NÃO TERMINAREM APOIADAS NOS PILARES-COLARINHO DE CONCRETO DEVEM TER NO MÍNIMO 15CM DE ANCORAGEM NOS BLOCOS DE CONCRETO EXISTENTES, COM USO DE ADESIVO ESTRUCTURAL DE BASE EPOXI.

**SAPATAS S32=S34**



**MUNICÍPIO DE BANDEIRANTE**

ÁREA  
348,47m²

**GINÁSIO MUNICIPAL DE ESPORTES DE BANDEIRANTE (2ª ETAPA)**

PROJETO: Projeto Estrutural

RESPONSÁVEL TÉCNICO: Eng.º Civil Juliana Mengatti - CREVASC nº 059.807-9

DATA DESENVOLVIDO: 2021

UNIDADES: m

DESENVOLVIDO: Juliana

PRINCIPAIS: EST-1/5

CONVÊNIO: Av. Santo Antônio, nº 793, esquina com a Rua Sete de Setembro Centro - Bandeirante/SC

FRANQUIA: EST-1/5