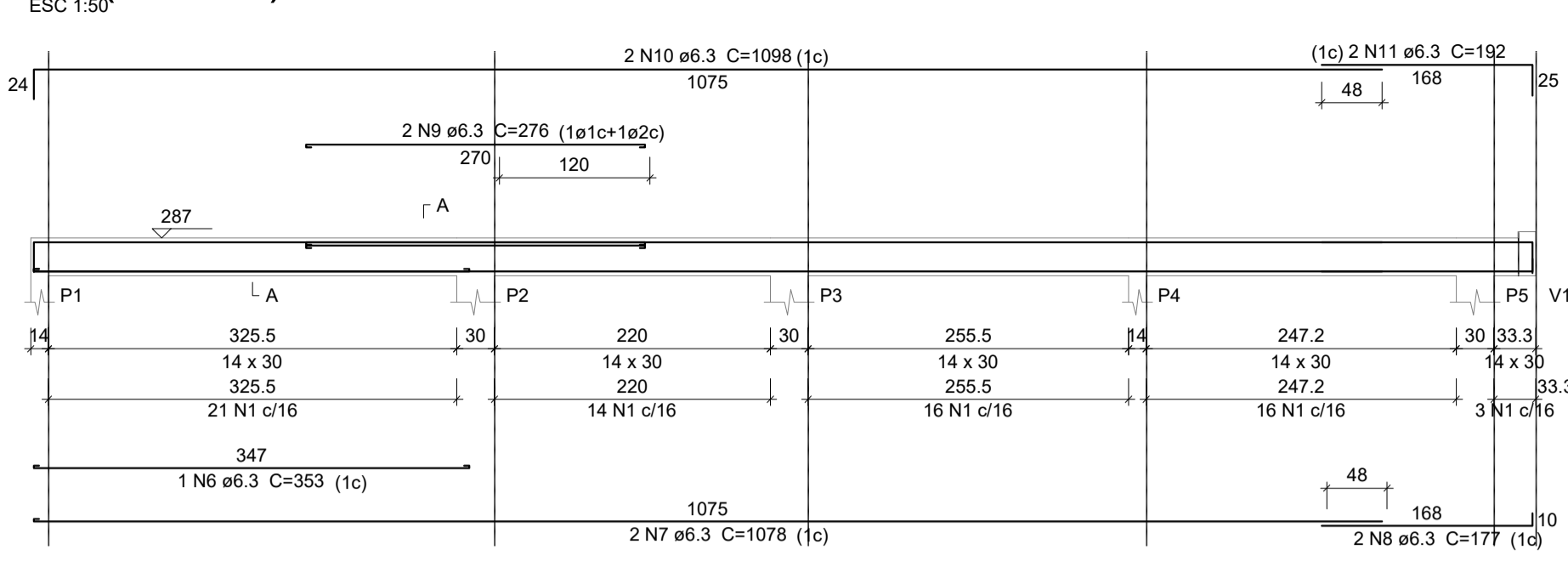
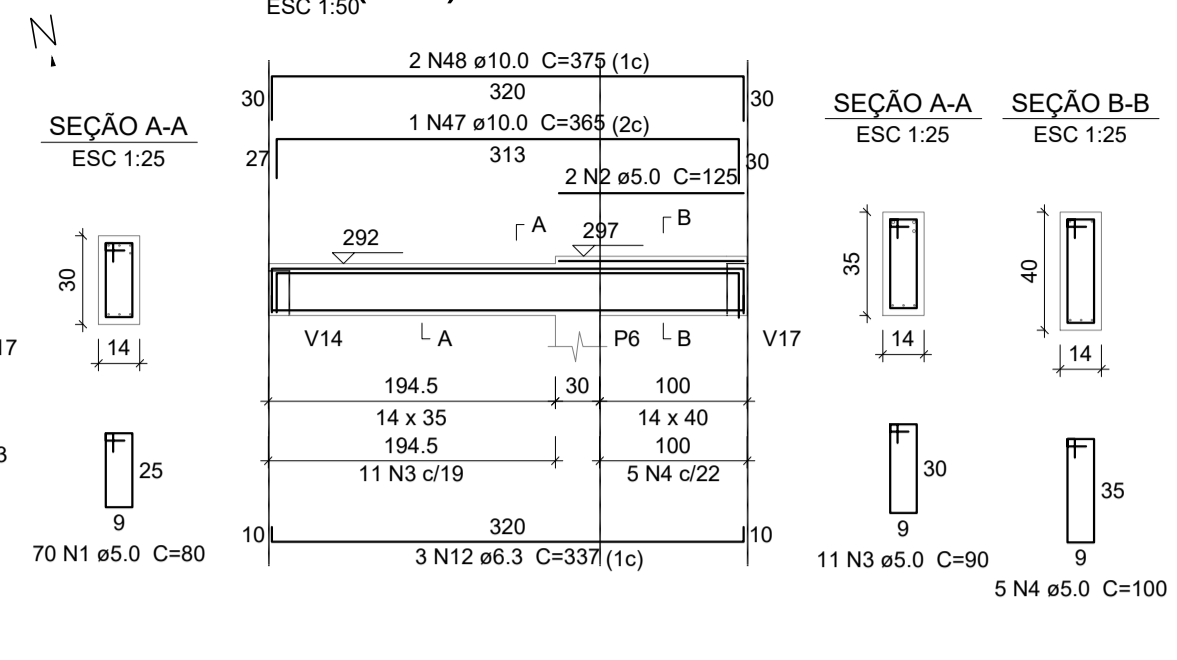


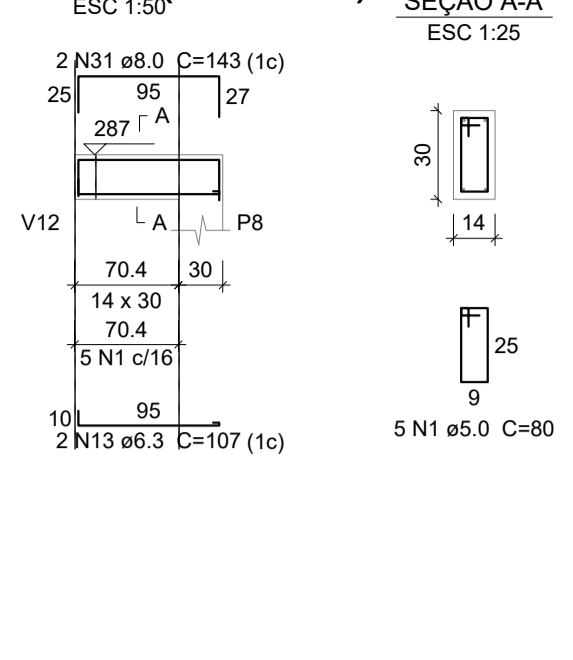
V1 (14 x 30)



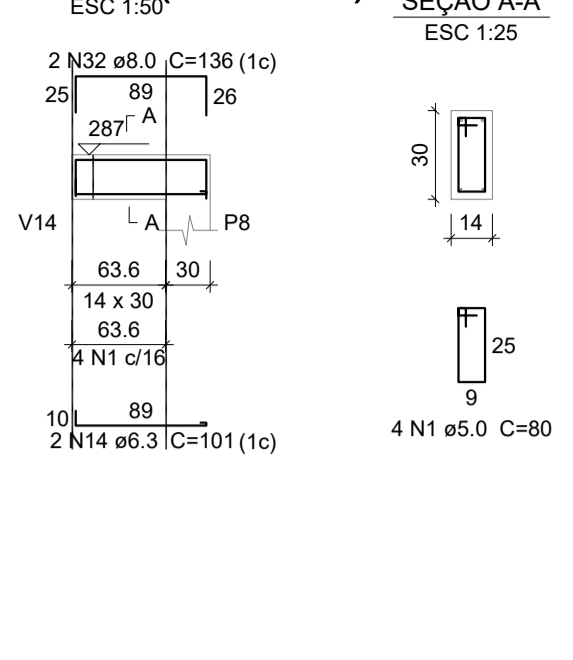
V2 (var)



V3 (14 x 30)



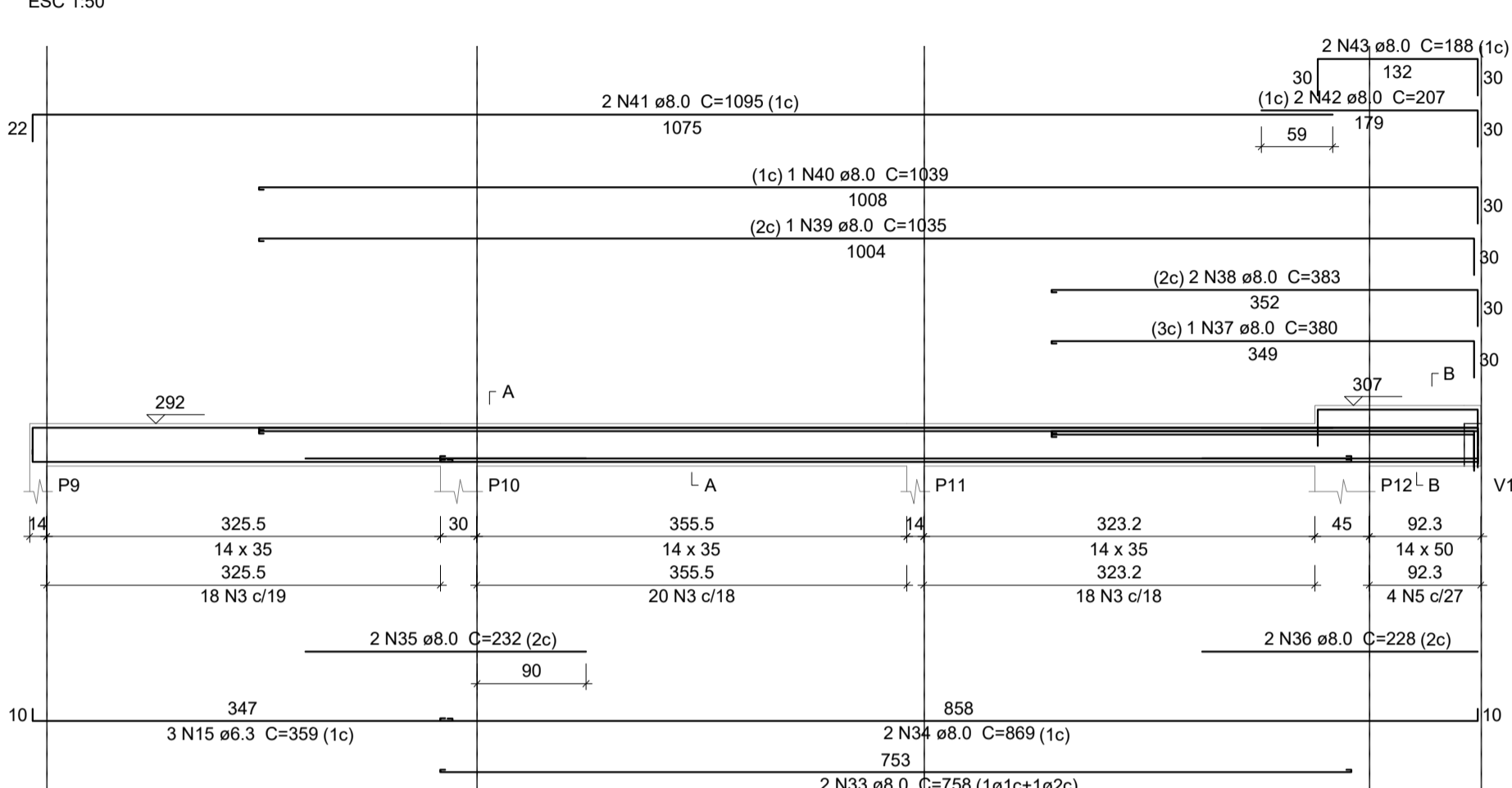
V4 (14 x 30)



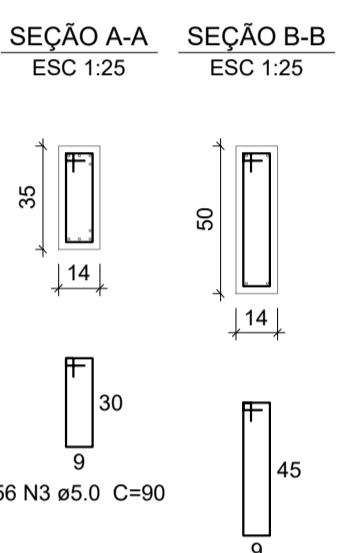
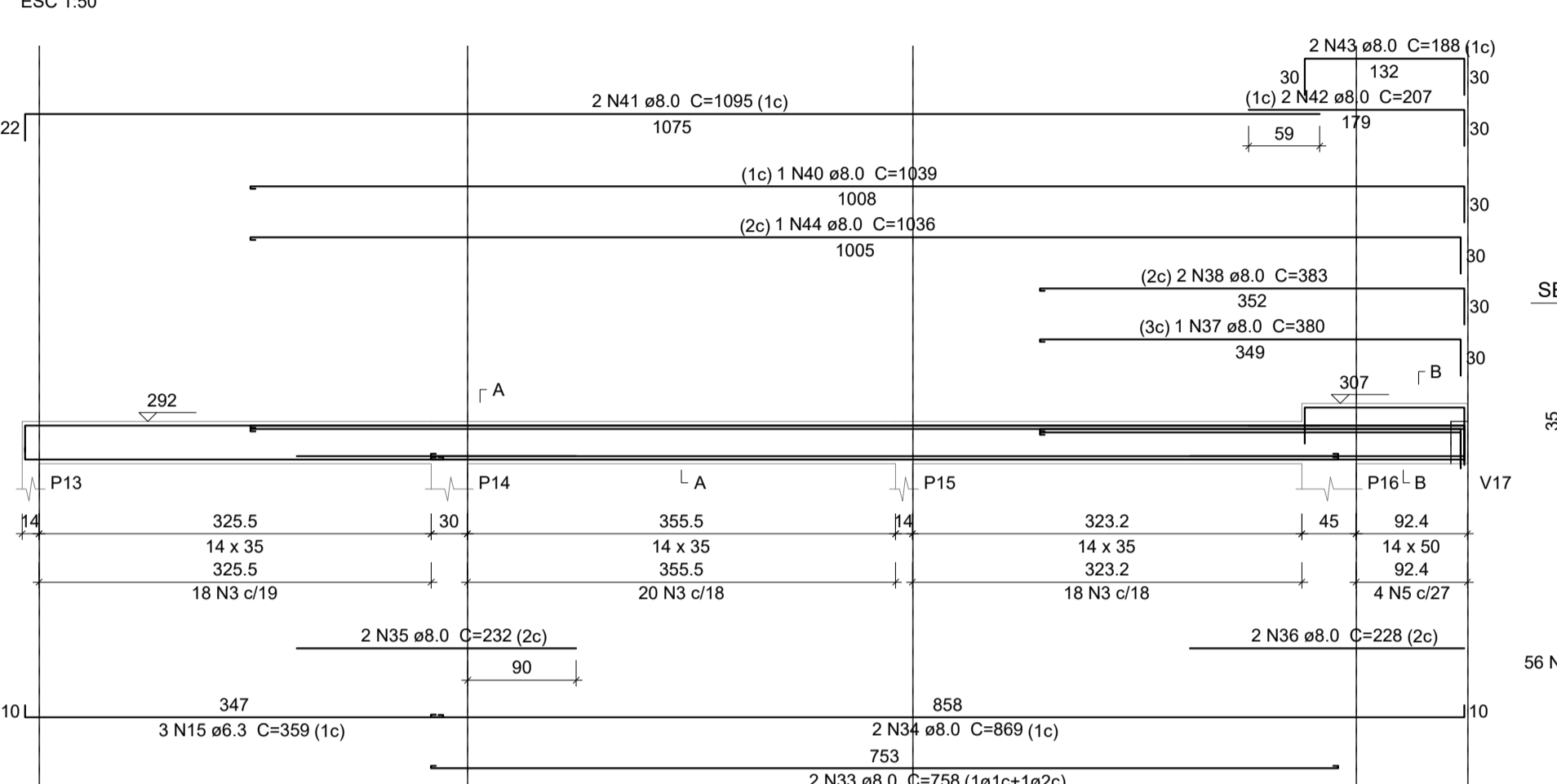
Relação do aço

AÇO	N	DIAM (mm)	QUANT	C.UNIT (cm)	C.TOTAL (cm)
CA60	1	5.0	325	80	26000
	2	5.0	4	125	500
	3	5.0	197	90	17730
	4	5.0	10	100	1000
	5	5.0	8	120	960
CA50	6	6.3	2	353	706
	7	6.3	4	1078	4312
	8	6.3	4	177	708
	9	6.3	6	276	1104
	10	6.3	4	1098	4392
	11	6.3	4	192	768
	12	6.3	6	337	2022
	13	6.3	2	107	214
	14	6.3	2	101	202
	15	6.3	6	359	2154
	16	6.3	2	176	352
	17	6.3	2	963	1926
	18	6.3	2	253	506
	19	6.3	2	1117	2234
	20	6.3	2	191	382
	21	6.3	4	235	940
	22	6.3	4	274	1096
	23	6.3	4	290	1160
	24	6.3	2	142	284
	25	6.3	4	322	1288
	26	6.3	4	379	1516
	27	6.3	3	1049	3147
	28	6.3	3	184	552
	29	6.3	3	1112	3336
	30	6.3	3	176	528
	31	8.0	2	143	286
	32	8.0	2	136	272
	33	8.0	4	758	3032
	34	8.0	4	869	3476
	35	8.0	4	232	928
	36	8.0	4	228	912
	37	8.0	2	380	760
	38	8.0	4	383	1532
	39	8.0	1	1035	1035
	40	8.0	2	1039	2078
	41	8.0	4	1095	4380
	42	8.0	4	207	828
	43	8.0	4	198	752
	44	8.0	1	1036	1036
	45	8.0	2	205	410
	46	8.0	4	339	1356
	47	10.0	2	365	730
	48	10.0	4	375	1500

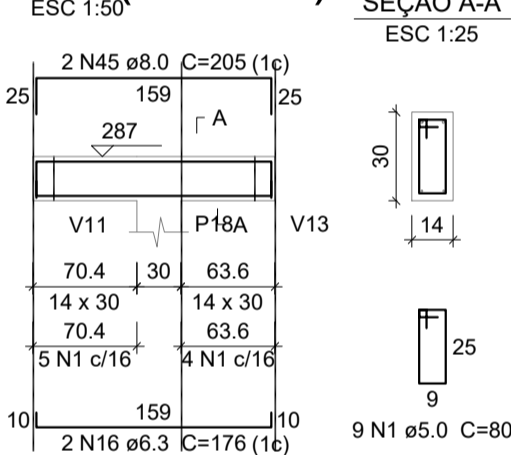
V5 (var)



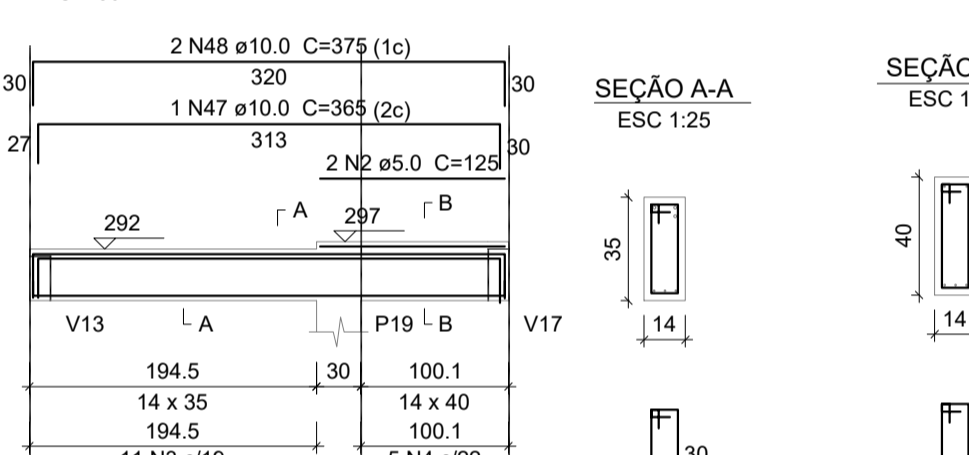
V6 (var)



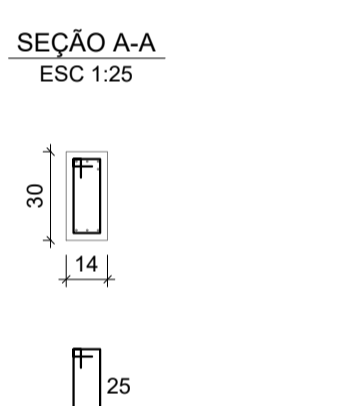
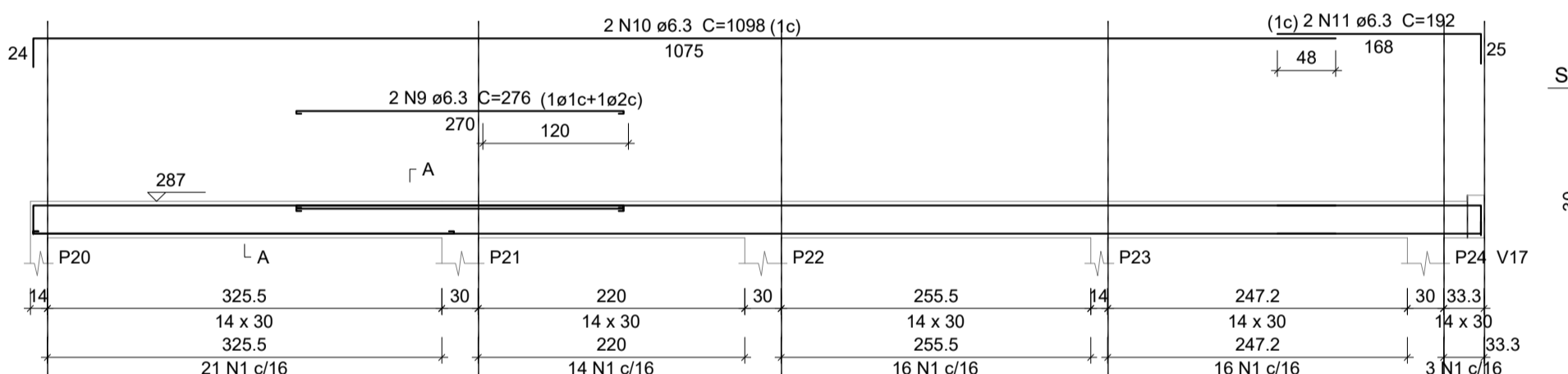
V7 (14 x 30)



V8 (var)



V9 (14 x 30)

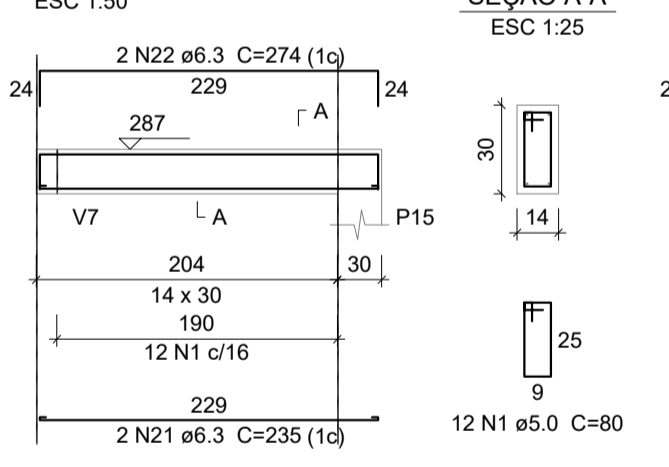


Resumo do aço

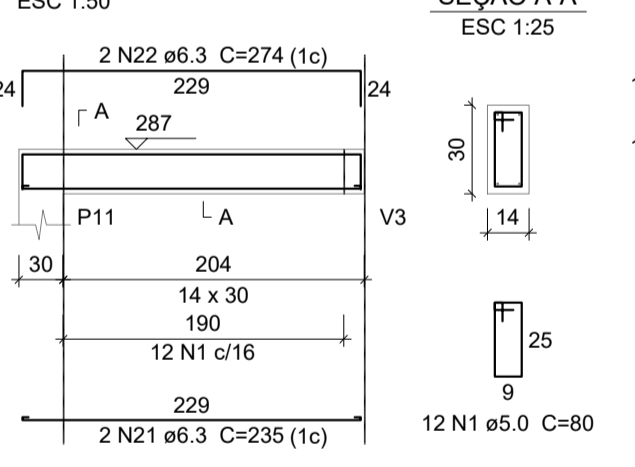
AÇO	DIAM (mm)	C.TOTAL (m)	QUANT + 10 % (Barras)	PESO + 10 % (kg)
CA50	6.3	358.3	33	96.4
	8.0	230.8	22	100.1
	10.0	22.3	3	15.1
CA60	5.0	461.9	43	78.3
PESO TOTAL (kg)				
CA50				211.7
CA60				78.3

Volume de concreto (C-25) = 4.55 m³
Área de forma = 78.94 m²

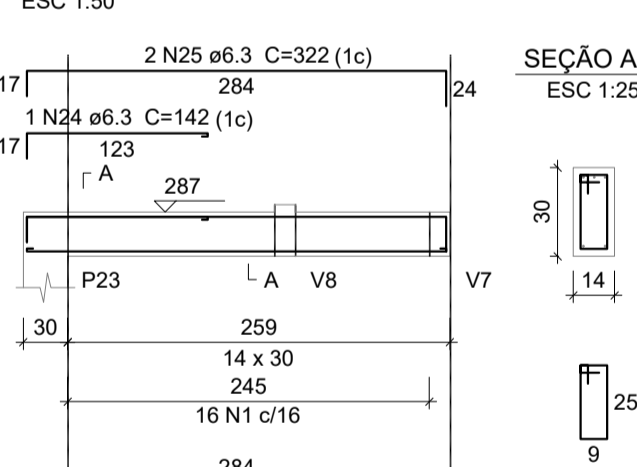
V11 (14 x 30)



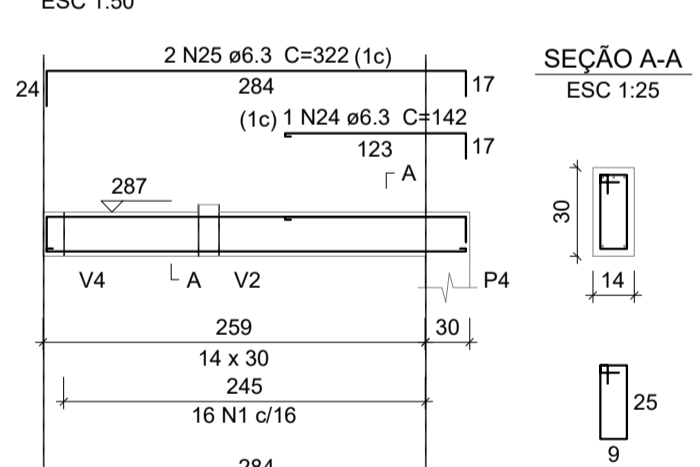
V12 (14 x 30)



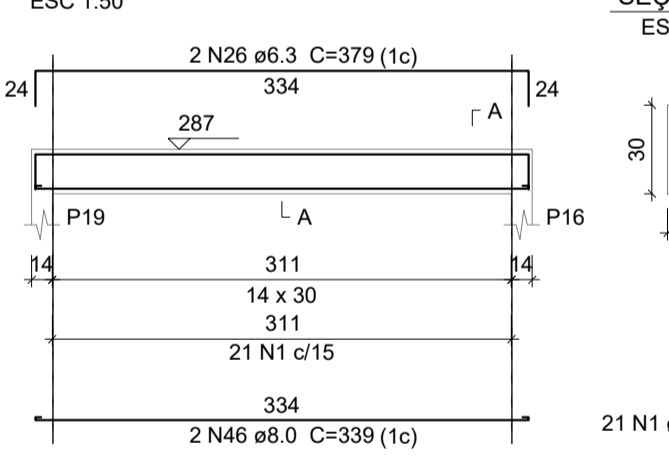
V13 (14 x 30)



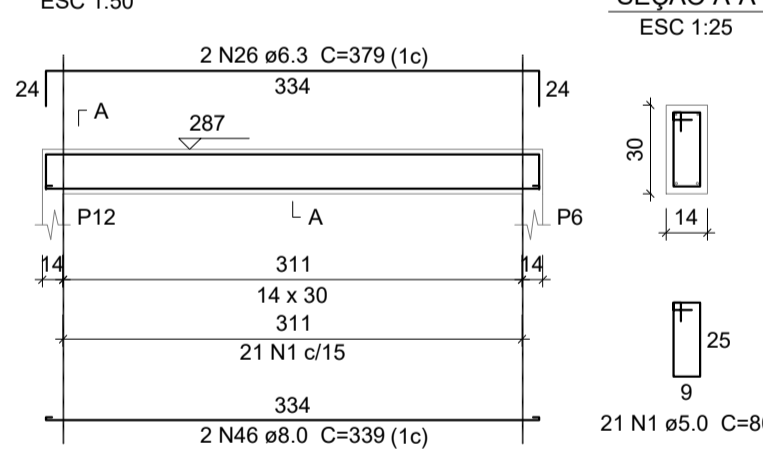
V14 (14 x 30)



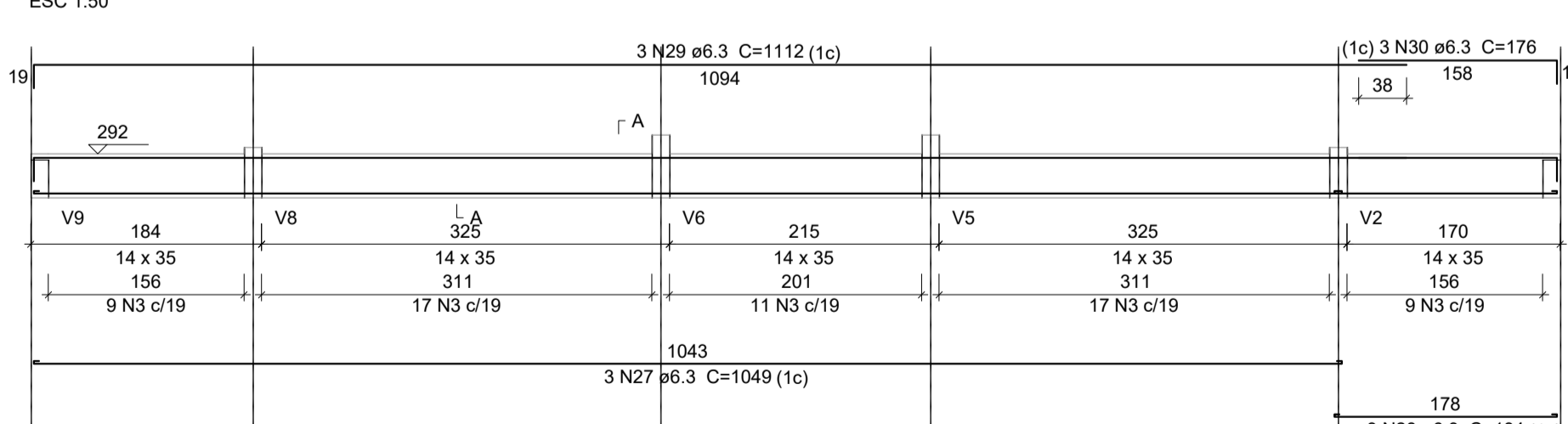
V15 (14 x 30)



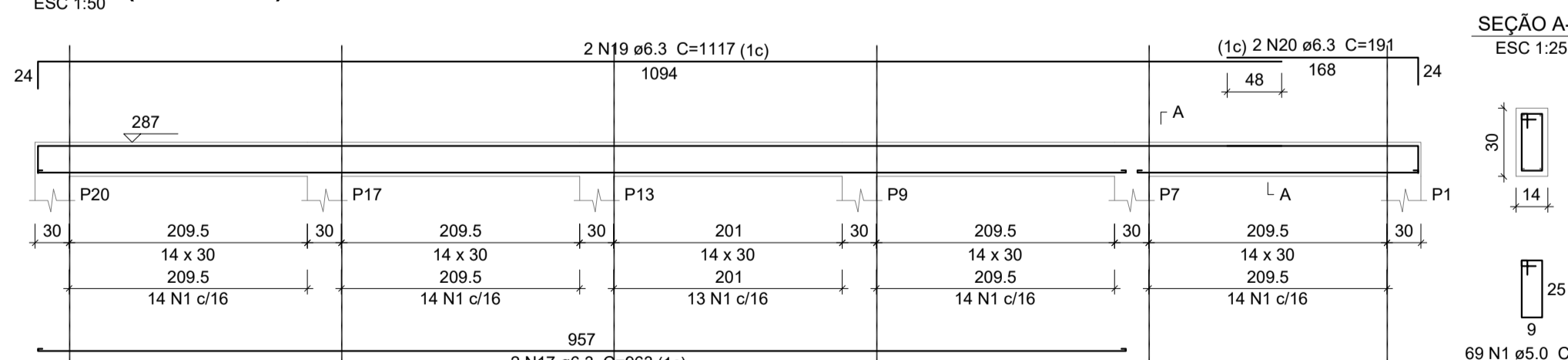
V16 (14 x 30)



V17 (14 x 35)



V10 (14 x 30)



Indianara Follmann
Arquiteta e Urbanista | CAU/SC 149411-2
(49) 991040658
arquitetaindiana@gmail.com

Projeto Estrutural	ESCALA INDICADA
DESCRIÇÃO DETALHE ARMADURA VIGA DE COBERTURA	PRANCHA 05/05
	ARQUIVO 00000
RESPONSÁVEL TÉCNICO:	DATA 04/11/2021
INDIANARA FOLLMANN ARQUITETA E URBANISTA CAU/SC 149411-2	ÁREA 146,40m²
PROPRIETÁRIOS:	
PREFEITURA MUNICIPAL DE BANDEIRANTE	